

# CS-SHADE-ROLLER-CABLEGUIDED

## Cable-Guided Option for QMT5 Series Shade Hardware

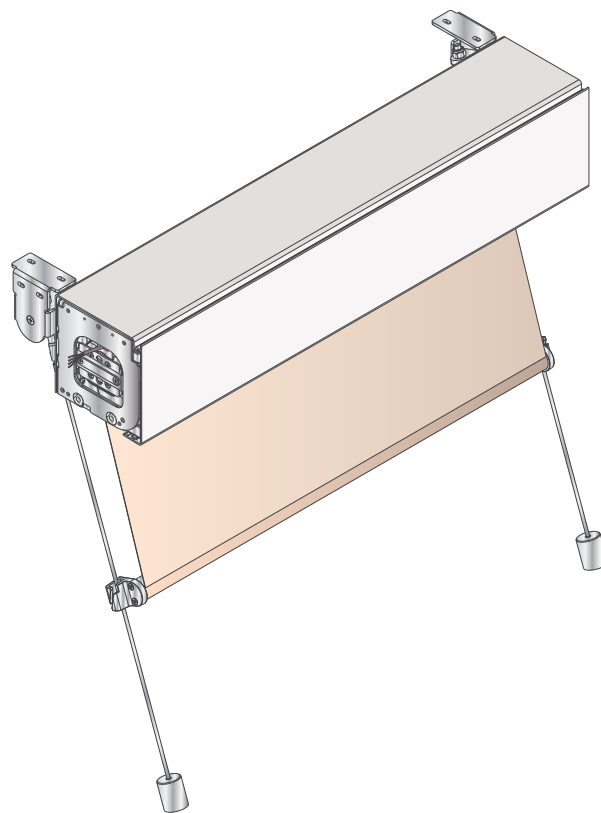
- > Cable-guided option for Crestron® QMT5 Series shade hardware
- > Weighted hembar glides up and down on two tensioned steel cables
- > Provides an effective and attractive shading solution for angled windows
- > Accommodates windows pitched inward or outward up to 20 degrees from vertical
- > Prevents shade fabric from swaying due to air movement
- > Ensures maximum reliability for tall, narrow shades
- > Compatible with inside, outside, and pocket mounted roller shades<sup>[1]</sup>
- > Designed for shades up to approximately 10 feet (3 meters) wide or long

**NOTE: This product is sold as part of a custom-configured solution. This document is for informational purposes. To configure and order shades, or to order shading parts and accessories, please use the [Crestron Design Tool](#) for Crestron Shading Solutions (CDT) or call 1-855-53-S-H-A-D-E (537-4233) for support.**

The Crestron® CS-SHADE-ROLLER-CABLEGUIDED is an optional accessory for Crestron QMT5 Series Architectural and Décor shade hardware ([CSS-ARCH5](#) and [CSS-DECOR5](#)). As part of a complete engineered shading solution, it provides a cable-guided tracking solution to prevent the shade fabric from swaying and allow for installation on angled windows. It is compatible with inside, outside, and pocket mounted roller shades up to approximately 10 feet (3 meters) wide or 10 feet (3 meters) long, and accommodates windows pitched inwardly or outwardly at up to 20 degrees from vertical.<sup>[1]</sup>

The cable-guided option employs a pair of tensioned steel cables running vertically at either side of the shade fabric. A specially weighted hembar with slotted end caps glides up and down the cables as the shade is raised and lowered. Small decorative anchors attach the cables at the bottom to the windowsill, window jamb, or floor. Precision brackets or blocks mount at the top to the window header, window jamb, or ceiling. Adjustable cable fittings allow for proper tensioning of each cable to ensure smooth travel and minimal sag.<sup>[2]</sup>

*Note: The CS-SHADE-ROLLER-CABLEGUIDED option must be specified and ordered as part of a complete engineered QMT5 Series Architectural or Décor shading system solution.*



### Notes:

1. The shade fabric does not retract fully when raised. At its upper limit, the hembar and some amount of fabric remains visible. Not compatible with blackout options. A minimum 1-1/4 inch (32 mm) light gap is expected.
2. The provided hardware facilitates attachment to solid wood or metal blocking. Alternate attachment hardware may be required to accommodate proper attachment to other surfaces. All surfaces must be rigid and stable.

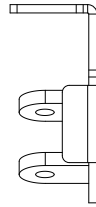
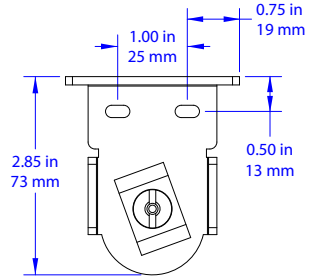
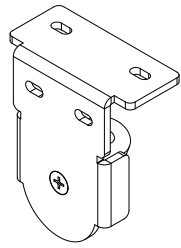
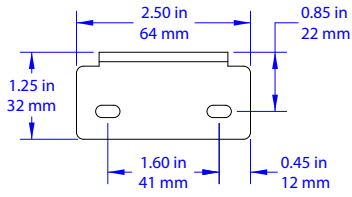
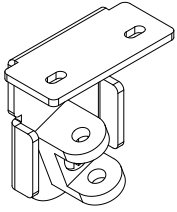
This product is sold as part of a custom-configured solution. This document is for informational purposes. To configure and order shades, or to order shading parts and accessories, please use the [Crestron Design Tool](#) for Crestron Shading Solutions (CDT) or call 1-855-53-S-H-A-D-E (537-4233) for support.

The specific patents that cover this and other Crestron products are listed online at <https://www.crestron.com/legal/patents>.

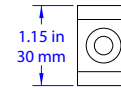
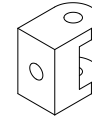
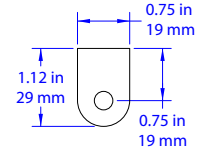
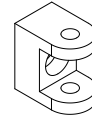
Certain Crestron products contain open source software. For specific information, please visit <https://www.crestron.com/opensource>.

Crestron and the Crestron logo are either trademarks or registered trademarks of Crestron Electronics, Inc. in the United States and/or other countries. Other trademarks, registered trademarks, and trade names may be used in this document to refer to either the entities claiming the marks and names or their products. Crestron disclaims any proprietary interest in the marks and names of others. Crestron is not responsible for errors in typography or photography. Specifications are subject to change without notice. ©2018 Crestron Electronics, Inc.

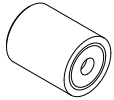
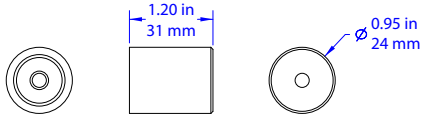
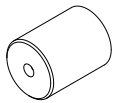
## MOUNTING HARDWARE



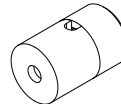
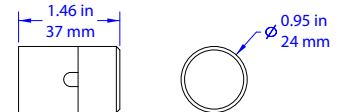
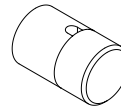
**Header/Ceiling Mount Bracket**



**Upper Jamb Mount Block**



**Sill/Floor Mount Anchor**



**Lower Jamb Mount Anchor**