

Crestron Intercom Systems

Description

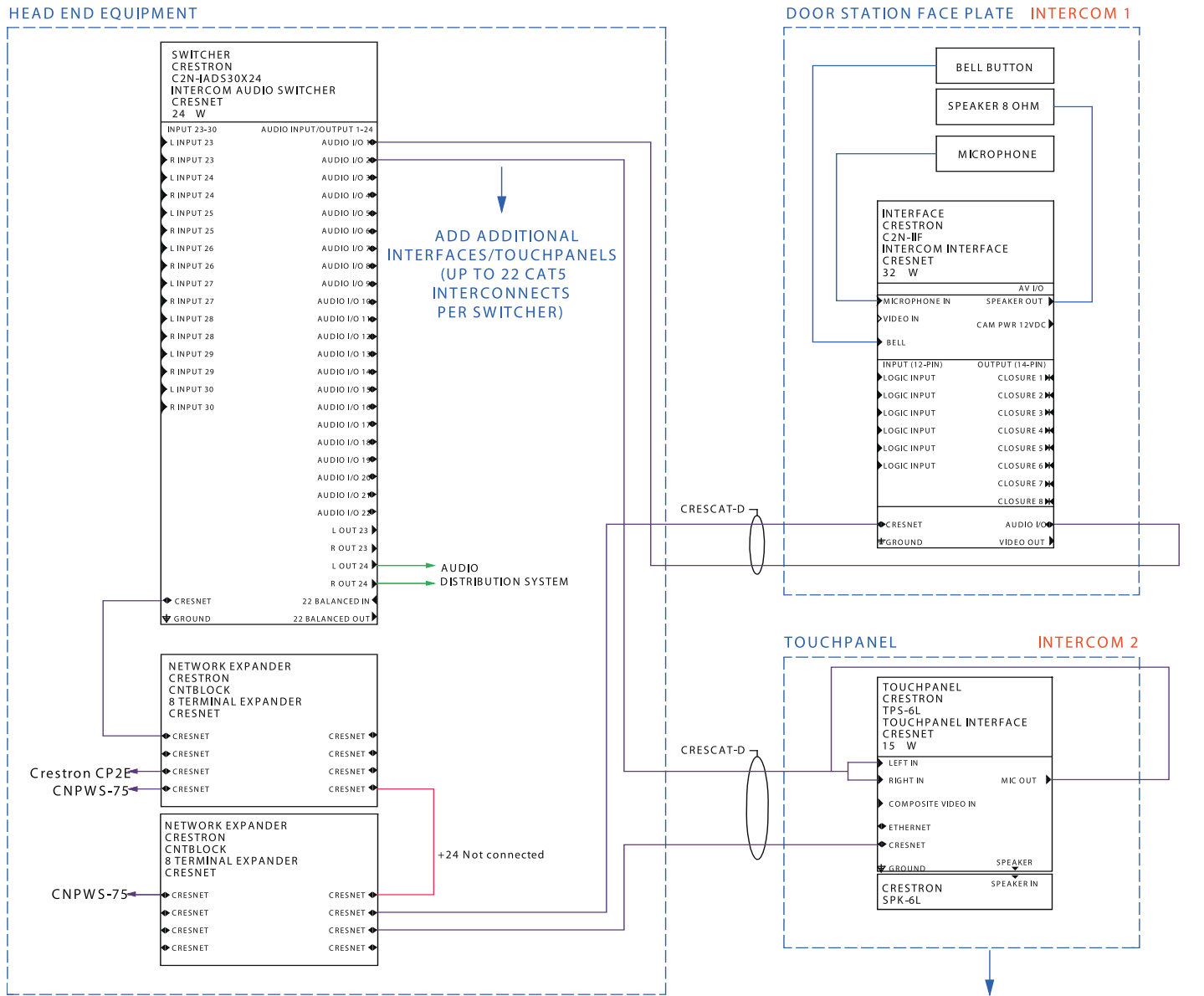
This document provides details of the intercom and paging systems that are available from Crestron. All solutions are fully integrated using a Crestron control system.

Feature Comparison	Features	Related System Options	Benefits
<p>Analog Solution Half-duplex intercom and paging using touchpanels, door stations and analog phones (with CEN-TIA Telephone Interface Module). Point-to-point communication. Whole house paging.</p>	<ul style="list-style-type: none"> • One-to-one door station intercom or touchpanels • One-to-many paging from door station or touchpanels 	<ul style="list-style-type: none"> • Video along with audio • Baby-monitor cam with audio • Security cam with audio • Page via whole house audio distribution system • Page from an analog telephone 	<ul style="list-style-type: none"> • Seamless integration with Crestron AV and/or lighting solutions • System expandability • Compatible with Crestron AV system • Compatible with Crestron Green Light™ • Standards-based for 3rd party hardware/software integration • Infinitely customizable
<p>Crestron IP Solution Bi-directional hands-free audio intercom. Point-to-point touchpanel communication.</p>	<ul style="list-style-type: none"> • Hands-free intercom over IP 	<ul style="list-style-type: none"> • Streaming video • Page via whole house audio distribution system • Paging from door stations and touchpanels (Barix interface and Crestron audio distribution system) • Cell phone or any outside line can be included in system (CEN-TIA and Barix interface) • Video along with audio (3rd party web streamer) • IP phones can be included in system (3rd party interface required) • Baby-monitor cam with audio • Security cam with audio 	<ul style="list-style-type: none"> • Seamless integration with Crestron AV and/or lighting solutions • Expandable system • Compatible with Crestron AV system • Compatible with Crestron Green Light • Standards-based for 3rd party hardware/software integration
<p>Skype Solution Bi-directional hands-free audio intercom. Point-to-point communication. Telephone calls originating from touchpanels (a SKYPE subscription is required).</p>	<ul style="list-style-type: none"> • Hands-free intercom over IP • Telephone call from IP touchpanel (requires SKYPE subscription) 	<ul style="list-style-type: none"> • Streaming video • Page via whole house audio distribution system • Paging from door stations and touchpanels (Barix interface and Crestron audio distribution system) • Cell phone or any outside line can be included in system (CEN-TIA and Barix interface) • Video along with audio (3rd party web streamer) • IP phones can be included in system (3rd party interface required) • Baby-monitor cam with audio • Security cam with audio 	<ul style="list-style-type: none"> • Seamless integration with Crestron AV and/or lighting solutions • Expandable system • Compatible with Crestron AV system • Compatible with Crestron Green Light • Standards-based for 3rd party hardware/software integration

Crestron Intercom Systems

Sample System: Analog Intercom

Schematic diagram



NOTES:
-ADDITIONAL POWER AND NETWORK EXPANDER WILL BE REQUIRED AS SYSTEM IS EXPANDED

ADD ADDITIONAL INTERFACES/TOUCHPANELS (UP TO 22 CAT5 INTERCONNECTS PER SWITCHER)

Crestron Intercom

Sample System Requirements

Crestron Intercom Interface	C2N-IADS30X24 At least one C2N-IADS30X24 is needed. The C2N-IADS30X24 Intercom Audio Distribution Switcher (IADS) facilitates the distribution and control of audio intercom signals for up to 22 touchpanels and door stations.		C2N-IIF At least two C2N-IIF (only one is required for paging only). The C2N-IIF Intercom Interface is designed to integrate a door station with a Crestron C2N-IADS30X24.	
Crestron Touchpanel Interface	Wall Mount Touchpanel TPS-6L TPS-4000L TPS-12L TPS-15L TPMC-15-CH-L TPS-17L TPMC-17-CH-L	Tilt Touchpanel TPS-3000 TPS-4000 TPS-12W TPS-12B TPS-15W TPS-15B TPMC-15-CH TPS-17W TPS-17B TPMC-17-CH	Wall Mount QM Touchpanel (Requires a QM transmitter and a QM receiver) TPS-12G-QM-L TPS-15G-QM-L TPMC-15-QM-L TPMC-17-QM-L	Tilt QM Touchpanel (Requires a QM transmitter and a QM receiver) TPS-12G-QM TPS-15G-QM TPMC-15-QM TPMC-17-QM
3rd Party Devices	Holovision Model 100 CRESTRON VERSION Specify Crestron version when ordering from Holovision (contains the C2N-IIF) www.holovision.com .		Intercom Any intercom interface compatible with the C2N-IIF (refer to the C2N-IIF manual).	

Sample System (BOM):

Crestron Intercom Interface	Bill Of Materials 1 CP2E 2 CNPWS-75 2 CNTBLOCK 1 C2N-IADS30X24 1 Holovision door station including C2N-IIF and C2N-IIF-SPMK 1 TPS-6L 1 SPK-6L 1 BB-6L	Optional Accessories TPS-6L-FP-BKLT-[A,B,W]-T Backlit Button Faceplate w/Custom Engraving TPS-6L-FP[A,B,W]-T Button Faceplate w/Custom Engraving TPS-6L-FP[A,B,W]-T-NB No-Button Faceplate w/Custom Engraving
------------------------------------	--	--

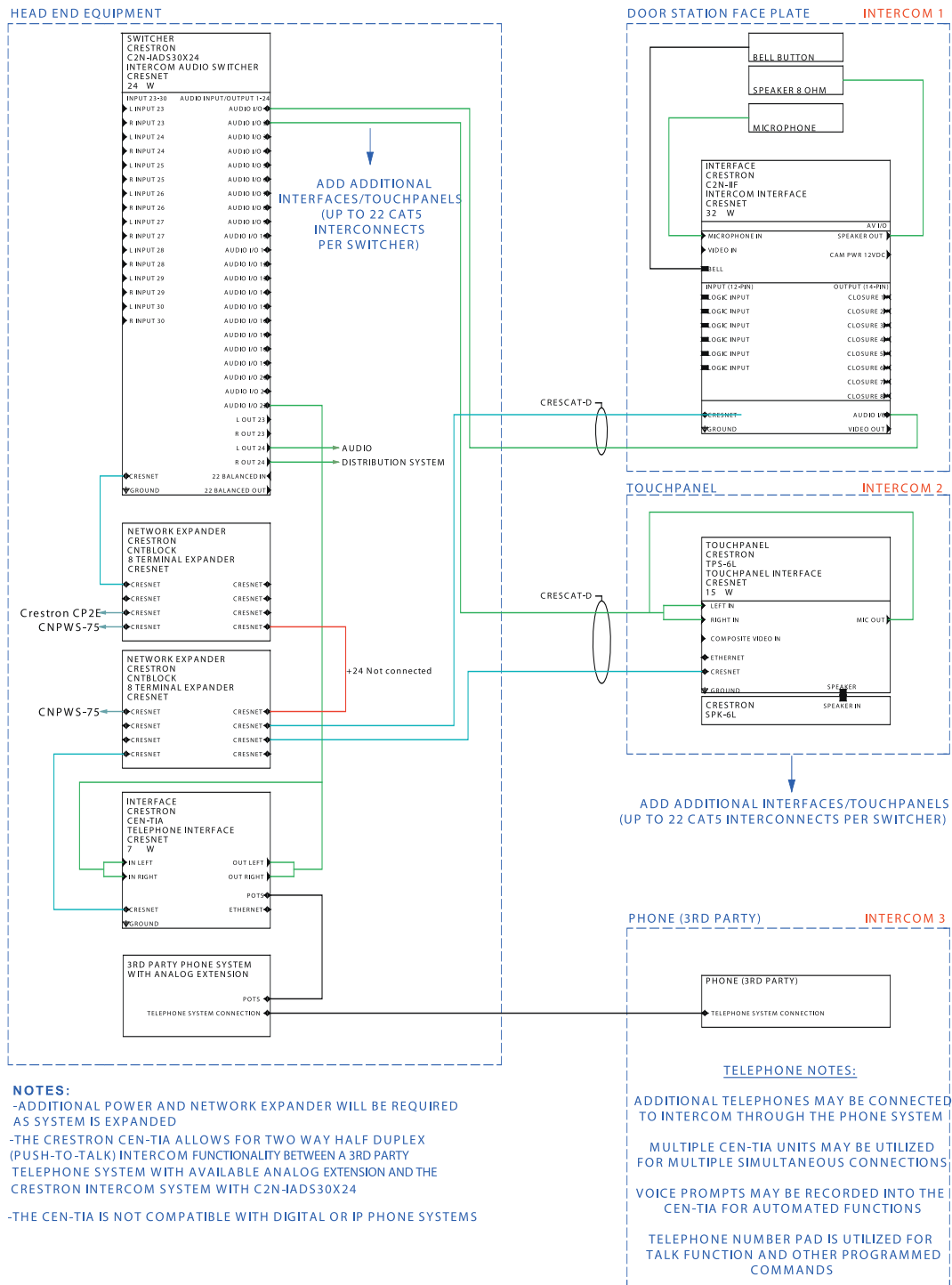
Wiring Requirements:

Wiring Needs for Each Endpoint	CresCAT™D At least one CresCAT™D cable for audio functionality.	CRESCAT-Q CRESCAT-Q cable for touchpanels or interfaces requiring video.
---------------------------------------	---	--

Crestron Intercom Systems

Sample System: Analog Intercom with 3rd Party Phone System

Schematic Diagram



Crestron Intercom Systems

Sample System Requirements

Crestron Intercom Interface	C2N-IADS30X24 At least one C2N-IADS30X24 is needed. The C2N-IADS30X24 Intercom Audio Distribution Switcher (IADS) facilitates the distribution and control of audio intercom signals for up to 22 touchpanels and door stations.		C2N-IIF At least two C2N-IIF (only one is required for paging only). The C2N-IIF Intercom Interface is designed to integrate a door station with a Crestron C2N-IADS30X24.	
Crestron Touchpanel Interface	Wall Mount Touchpanel TPS-6L TPS-4000L TPS-12L TPS-15L TPMC-15-CH-L TPS-17L TPMC-17-CH-L	Tilt Touchpanel TPS-3000 TPS-4000 TPS-12W TPS-12B TPS-15W TPS-15B TPMC-15-CH TPS-17W TPS-17B TPMC-17-CH	Wall Mount QM Touchpanel (Requires a QM transmitter and a QM receiver) TPS-12G-QM-L TPS-15G-QM-L TPMC-15-QM-L TPMC-17-QM-L	Tilt QM Touchpanel (Requires a QM transmitter and a QM receiver) TPS-12G-QM TPS-15G-QM TPMC-15-QM TPMC-17-QM
3rd Party Devices	Holovision Model 100 CRESTRON VERSION Specify Crestron version when ordering from Holovision (contains the C2N-IIF) www.holovision.com . Phone System with available analog extension for CEN-TIA connection.		Intercom Any intercom interface compatible with the C2N-IIF (refer to the C2N-IIF manual). Phone System Telephones with DTMF (touch-tone) capability.	

Sample System (BOM):

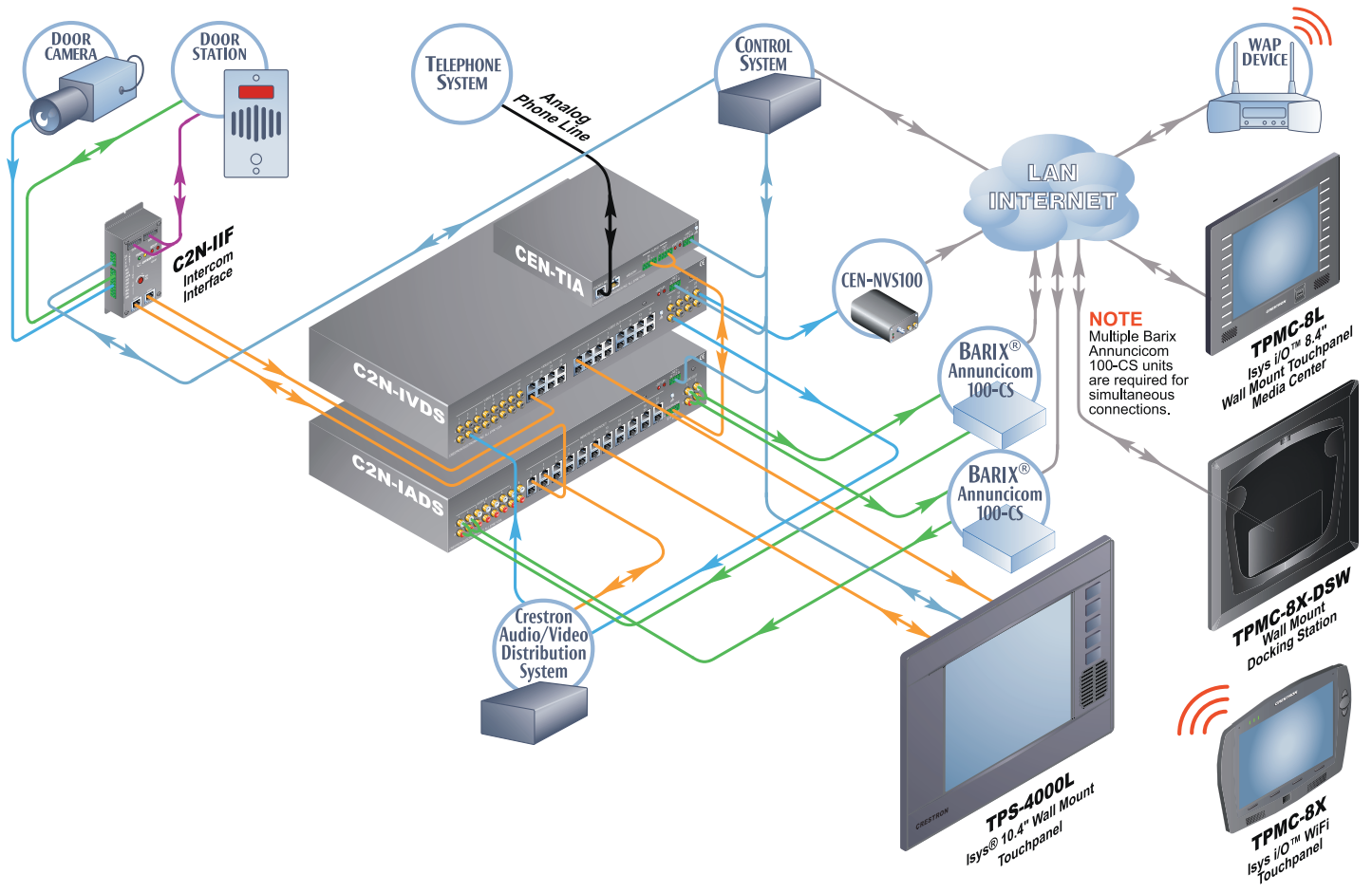
Crestron Intercom Interface	Bill Of Materials 1 CP2E 2 CNPWS-75 2 CNTBLOCK 1 C2N-IADS30X24 1 Holovision door station including C2N-IIF and C2N-IIF-SPMK 1 TPS-6L 1 SPK-6L 1 BB-6L 1 CEN-TIA	Optional Accessories TPS-6L-FP-BKLT-[A,B,W]-T Backlit Button Faceplate w/Custom Engraving TPS-6L-FP[A,B,W]-T Button Faceplate w/Custom Engraving TPS-6L-FP[A,B,W]-T-NB No-Button Faceplate w/Custom Engraving ST-RMK
------------------------------------	---	--

Wiring Requirements:

Wiring Needs for Each Endpoint	CresCAT™D At least one CresCAT™D cable for audio functionality	CRESCAT-Q CRESCAT-Q cable for touchpanels or interfaces requiring video.
---------------------------------------	--	--

Crestron Intercom Systems

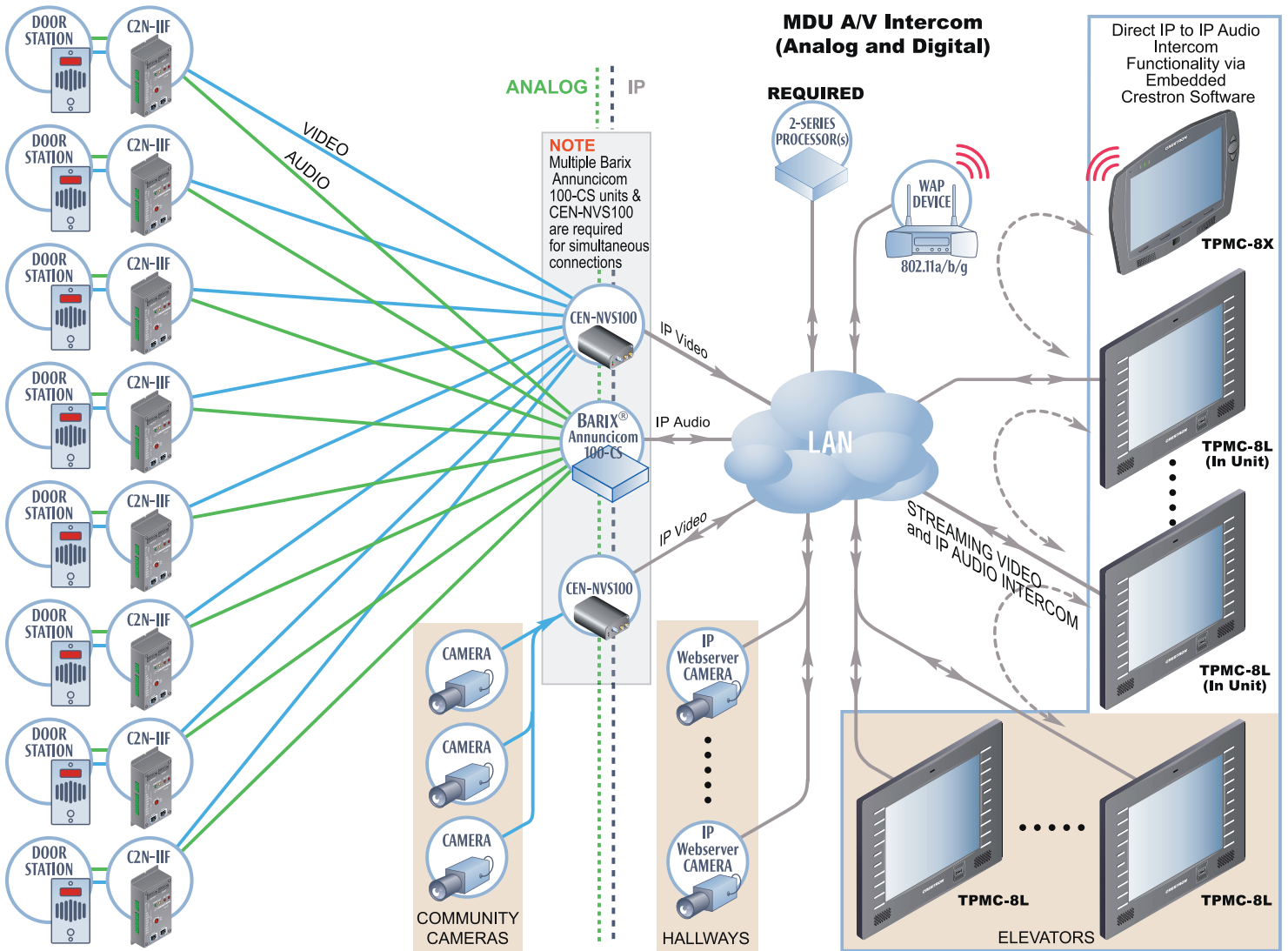
Direct IP Communication with Isys i/O™ Touchpanels



Crestron Intercom Systems

System Overview Diagram

Crestron IP + Crestron Analog



Crestron Intercom Systems

System Overview Diagram

Crestron IP, SKYPE + SIP

SKYPE Phone/Internet Capabilities

