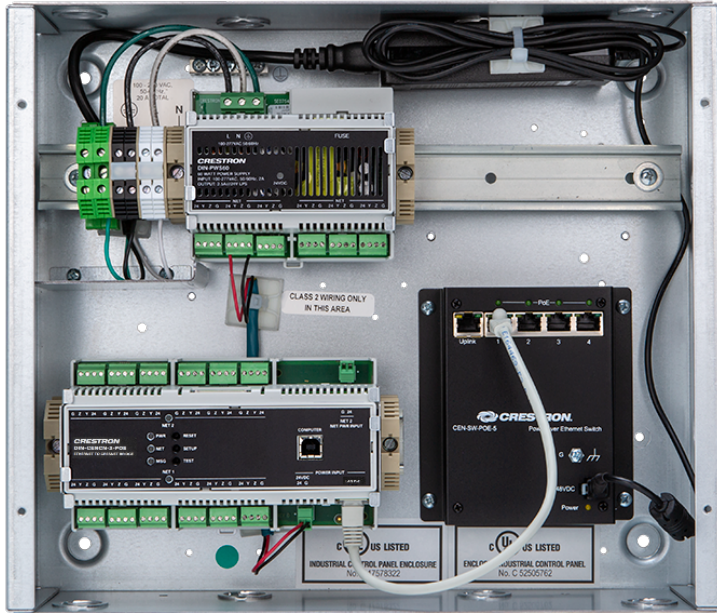


CLP-HUB-SW-POE-5

Lighting Network Expansion Panel with Ethernet to Cresnet® Network Bridge, 2 Cresnet Subnets, and 3 PoE Ports



- *Preassembled network expansion panel for Crestron® lighting control*
- *For commercial lighting applications*
- *Contains an Ethernet to Cresnet bridge, Cresnet® power supply, and 5-Port PoE Switch*
- *Provides two isolated Cresnet subnets with power distribution*
- *Provides three Ethernet LAN ports with PoE*

The Crestron® CLP-HUB-SW-POE-5 is a preassembled lighting network expansion panel that expands Ethernet and Cresnet® network connectivity for a Crestron lighting system. It is designed for use with Crestron [GLNET-CN](#), [ZUML-HUB4-CN-PAK](#), and [ZUML-HUB4-GW KIT](#) Lighting Control Processor Panels. It contains an Ethernet to Cresnet Bridge ([DIN-CENCN-2-POE](#)), 60 Watt Cresnet Power Supply ([DIN-PWS60](#)), and 5-Port PoE Switch ([CEN-SW-POE-5](#)) that provides three PoE ports, all mounted in a wall mount enclosure ([DIN-EN-2X18](#)).

For additional details and specifications, refer to the [DIN-CENCN-2-POE](#), [DIN-PWS60](#), [CEN-SW-POE-5](#), and [DIN-EN-2X18](#) product pages.

Specifications

Power

Main Power 120VAC, 60 Hz

Environmental

Temperature 41° to 104°F (5° to 40°C)

Humidity 10% to 90% RH (noncondensing)

Dimensions

Height 12-15/16 in. (323 mm)

Width 14-1/8 in. (359 mm)

Depth 4-3/8 in. (111 mm)

Compliance

CE, UL® Listed

CLP-HUB-SW-POE-5 systems fully assembled in Crestron's UL certified panel shop are UL508 Listed.

To search for product certificates, refer to support.crestron.com/app/certificates.

Assembly

CLP-HUB-SW-POE-5 systems fully assembled in Crestron's UL certified panel shop are UL508 Listed. The individual components may also be ordered and shipped unassembled, requiring on-site assembly and any applicable certifications and inspections.

Model

CLP-HUB-SW-POE-5

Lighting Network Expansion Panel with Ethernet to Cresnet® Network Bridge, 2 Cresnet Subnets, and 3 PoE Ports

Included Accessories

DIN-EN-2X18

Enclosure for DIN Rail Devices, 2 DIN Rails, 18 M Wide

DIN-CENCN-2-POE

Ethernet to Cresnet® Network Bridge with PoE

DIN-PWS60

DIN Rail 60 Watt Cresnet® Power Supply

CEN-SW-POE-5

5-Port PoE Switch

CLP-HUB-SW-POE-5

Lighting Network Expansion Panel with Ethernet to Cresnet® Network Bridge, 2 Cresnet Subnets, and 3 PoE Ports

Available Accessories

For a list of available accessories, visit the [CLP-HUB-SW-POE-5](#) product page.

This product may be purchased from select authorized Crestron dealers and distributors. To find a dealer or distributor, please contact the Crestron sales representative for your area. A list of sales representatives is available online at www.crestron.com/How-To-Buy/Find-a-Representative or contact us for additional information by visiting www.crestron.com/contact/our-locations for your local contact.

The original language version of this document is U.S. English. All other languages are a translation of the original document.

The product warranty can be found at www.crestron.com/warranty.

The specific patents that cover Crestron products are listed online at patents.crestron.com.

Certain Crestron products contain open source software. For specific information, please visit www.crestron.com/opensource.

Crestron, the Crestron logo, and Cresnet are either trademarks or registered trademarks of Crestron Electronics, Inc. in the United States and/or other countries. UL is either a trademark or registered trademark of Underwriters Laboratories, Inc. in the United States and/or other countries. Other trademarks, registered trademarks, and trade names may be used in this document to refer to either the entities claiming the marks and names or their products. Crestron disclaims any proprietary interest in the marks and names of others. Crestron is not responsible for errors in typography or photography.

Specifications are subject to change without notice.

©2022 Crestron Electronics, Inc.

Rev 09/09/22

CLP-HUB-SW-POE-5

Lighting Network Expansion Panel with Ethernet to Cresnet® Network Bridge, 2 Cresnet Subnets, and 3 PoE Ports

