

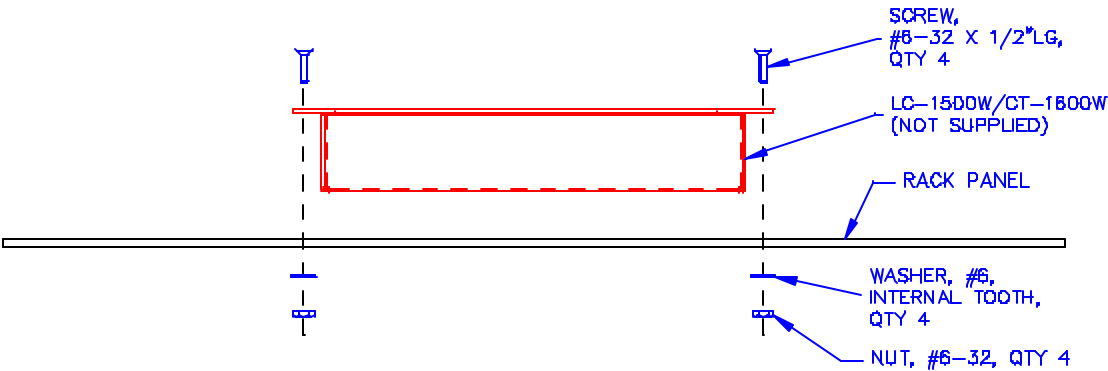
Rack Mount Kit: RMK-1500

The RMK-1500 is a complete rack mount kit that has been developed for LC-1500W and CT-1600W touchpanel models. Use the supplied hardware to attach the supplied 19 inch (48.26 cm) rack panel to the touchpanel.

Supplied Hardware

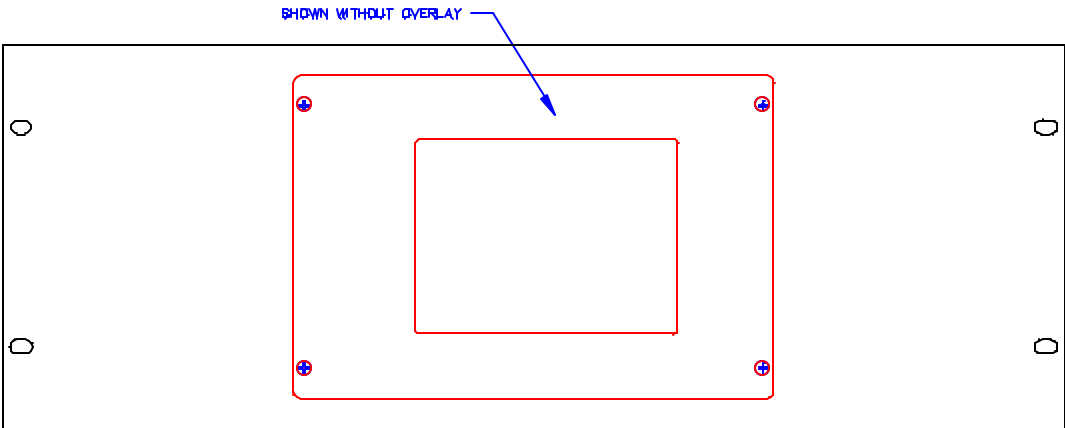
ITEM	PART NUMBER	QUANTITY
19" (48.26 cm) Rack Panel	02218	1
Screw, Flat Phil	#6-32 x 0.5" LG	4
Nut, Hex	#6-32	4
Washer, Lock	#6	4

Assembly View



Rack-Mount View

Once the rack panel is secured to the touchpanel with the mounting hardware, the assembly (shown below) is ready to be mounted to the rack. Rack-mounting hardware is not supplied.



Crestron Electronics, Inc.
 15 Volvo Drive
 Rockleigh, NJ 07647
 Tel: 888.CRESTRON / 201.767.3400
 Fax: 201.767.7576 / BBS: 201.767.5506
 www.crestron.com

Specifications subject to change without notice.
 Doc. 5754
 03.99