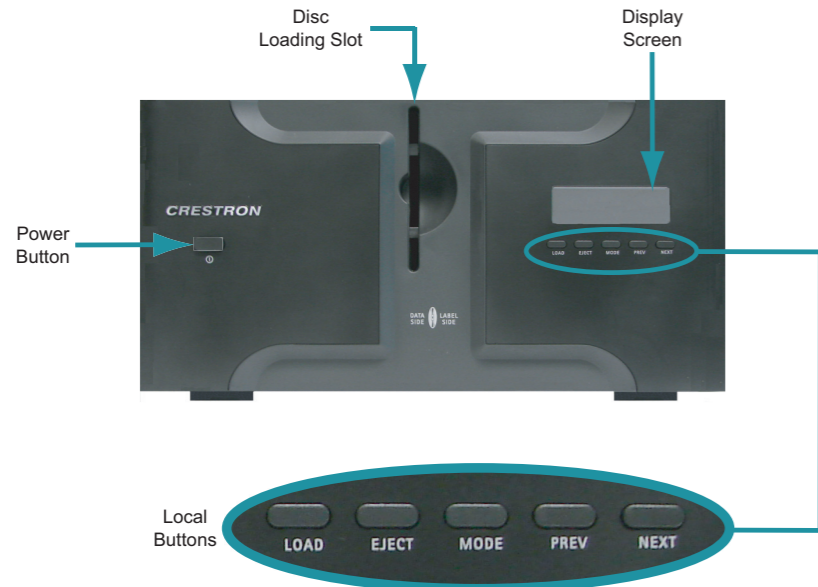


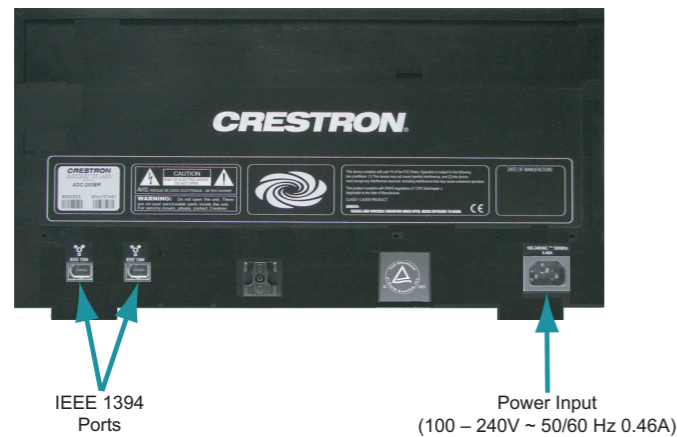
ADC-200BR

200-Disc Blu-ray Changer

1 Front View



2 Rear View



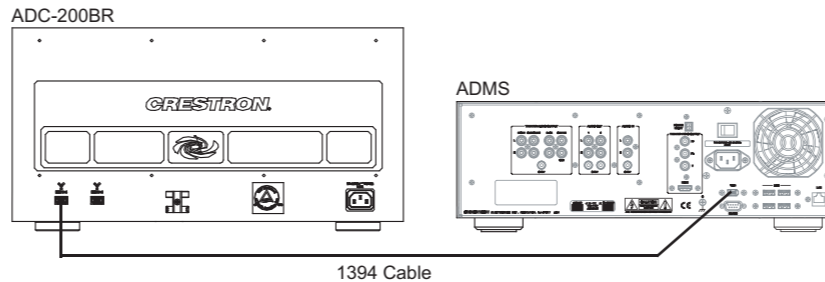
3 Connecting the ADC-200BR

Connections to the ADC-200BR are made on the rear panel of the device.

Connecting to the ADMS

Using the supplied IEEE 1394 cable, connect one of the IEEE 1394 ports on the ADC-200BR to the IEEE 1394 port on the rear of the ADMS.

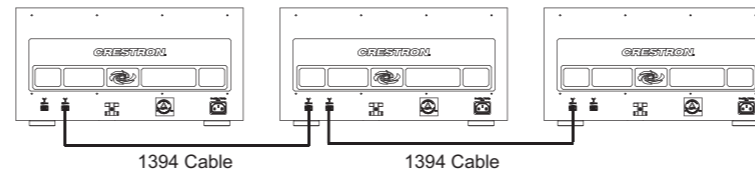
NOTE: Do not connect multiple ADMS devices to one ADC-200BR device.



For information about the ADMS, refer to the latest version of the ADMS Operations Guide (Doc. 6854), which is available from the Crestron website (www.crestron.com/manuals).

Daisy Chaining Multiple ADC-200BR Devices

Up to five ADC-200BR devices can be daisy chained. To daisy chain multiple devices, use the 1394 cable supplied with the ADC-200BR to connect an IEEE 1394 port on one device to an IEEE 1394 port on the next device to be connected. In the illustration below, three ADC-200BR devices are daisy chained.



Connecting the Power Cable

Using the supplied IEC power cable, connect the socket of the cable to the power input of the ADC-200BR. Connect the other end of the cable to a wall socket.

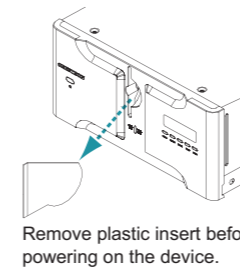
CAUTION: Do not power on the ADC-200BR until you remove the protective insert from the disc loading slot. Proceed to section 4 for additional information.

4 Powering On the ADC-200BR

NOTE: The ADC-200BR must be powered on **before** the ADMS is powered on.

Before powering on the ADC-200BR, remove the plastic insert from the disc loading slot to prevent damage to the slot when the device is powered on. The insert was placed into the slot at the factory to protect the slot during shipment.

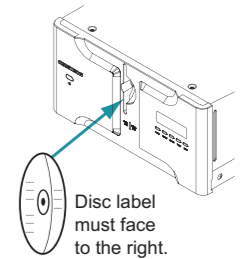
To power on the ADC-200BR, press the **Power** button.



5 Loading Discs into the ADC-200BR

NOTE: Audio CDs are ignored by the ADC-200BR.

- To load multiple discs into the ADC-200BR:
 - Press the **LOAD** button twice. The message "PLEASE LOAD DISCS" appears on the ADC-200BR display screen.
 - Load the first disc by positioning it so that the label faces to the right, and then insert the disc into the slot.



NOTE: After a disc is loaded into a slot, the ADC-200BR times out of *Load* mode after approximately five seconds. If the device times out, press the **LOAD** button twice to enable *Load* mode again.

- Repeat step 2 for each disc to be loaded.

NOTE: The ADC-200BR automatically scans each disc and looks up cover art and movie information without the need for you to perform any steps using the ADMS menu.

NOTE: Several hours are required for 200 discs in a fully loaded ADC-200BR changer to be scanned. Assuming a disc is in good condition, an average of 90 seconds is required for a disc to be scanned; however, depending on Internet speed and database lookup, up to four minutes may be required.

While the discs are being scanned, do not disconnect IEEE 1394 ports or power from the ADC-200BR or the ADMS.

As the discs are being scanned, status messages and system notification icons appear in the upper righthand corner of the ADMS On-Screen Display (OSD). To indicate system events related to the ADC-200BR, the following icons appear on the ADMS OSD:

- The ADC-200BR is scanning.
- The ADC-200BR is offline or has an error condition.

To view pertinent information indicated by each icon, use the arrows keys on the remote control to navigate to and highlight the icon on the ADMS OSD.

- To load a single disc into the ADC-200BR:
 - Press the **LOAD** button once. The message "PLEASE LOAD DISC" appears on the ADC-200BR display screen.
 - Insert the disc (refer to step 2 of the procedure above, which provides instructions to load multiple discs into the device).

CAUTION: Do not transport the ADC-200BR with discs inserted into the slots. Eject all discs (refer to section 6) before transporting the device to a different location.

6 Ejecting a Disc

To eject a disc from the disc loading slot of the ADC-200BR:

- Press the **EJECT** button.
- Locate the disc that you want to eject by pressing the **PREV** or **NEXT** button as appropriate until the name of the disc to be ejected appears on the display screen.
- Press the **EJECT** button again. The desired disc is ejected.
- Remove the disc from the slot.

For Regulatory Compliance information, refer to the latest version of Doc. 6857.

QUICKSTART DOC. 6853C (2024933) 01.10

www.crestron.com | 888.273.7876 | 201.767.3400

©2010 Specifications subject to change without notice.

All brand names, product names, and trademarks are the property of their respective owners.

