

CEN-WAP-ABG-CM

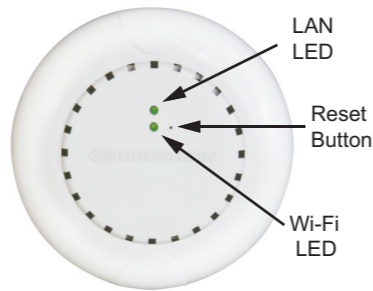
Ceiling Mount 802.11a/b/g Wireless Access Point

1 Introduction

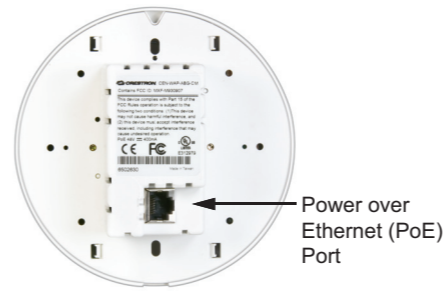
The CEN-WAP-ABG-CM is a wireless access point that supports IEEE 802.11a/b/g Wi-Fi technology. In addition, the access point supports the IEEE 802.3af Power over Ethernet (PoE) industry standard. Using PoE technology, the access point receives both power and data by way of a single Ethernet cable.

Shipped with uniquely configured network identification settings, the CEN-WAP-ABG-CM provides a secure wireless connection for Crestron® Wi-Fi touchpanels. As a result, additional configuration of the access point is not required as part of the installation. To accommodate applications in which customized configuration settings are desired, however, the access point provides a Web-based configuration utility that offers a setup wizard as well as additional network management settings.

Front View



Rear View



Indicators and Control (Front of Unit)

INDICATORS & CONTROL	DESCRIPTION
LAN	Solid green LED indicates that the PoE port has established a valid Ethernet connection.
Reset	Recessed push button that resets the device. If depressed for eight seconds, the configuration settings of the device are reset to factory-default settings.
Wi-Fi	Solid green LED indicates that a wireless network connection has been established. Flashing green LED indicates wireless data activity.

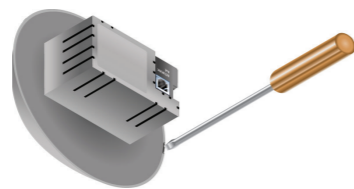
2 Installing the CEN-WAP-ABG-CM

Before installing the CEN-WAP-ABG-CM, note the following:

- The access point must be installed in a temperature-controlled environment ranging from 32° to 104° F (0° to 40° C).
- The access point mounts into a one-gang low-voltage bracket or electrical box. The recommended depth of the electrical box is a minimum of two inches. The maximum voltage of the access point is 48 VDC.
- For the best possible range, it is recommended that you mount the access point as far away as possible from metal.
- Do not remove the sticker that is attached to the front of the access point until you have completed the steps in section 3 of this guide.

To install the access point:

1. Remove the cover by inserting a screwdriver into the notch at the bottom of the unit and pushing the base of the unit upward until it detaches from the cover.



NOTE: If desired for the installation, paint the cover using an airbrush or spray paint before reattaching it in step 4 of this procedure.

2. Depending on the equipment you have purchased, connect the PoE port of the access point to one of the following:

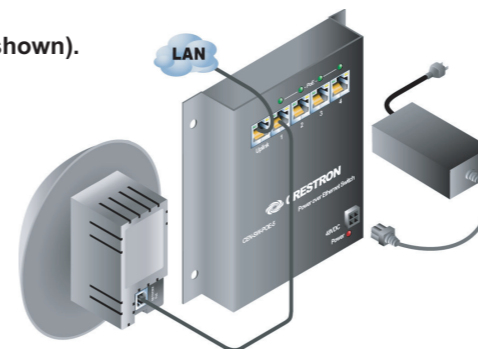
- **Crestron PoE injector (Part No. PWE-4803RU).**

For information about the PoE injector, refer to the latest version of the PWE-4803RU PoE Injector Installation Guide (Doc. 6712), which is available from the Crestron website (www.crestron.com/manuals).



- **Crestron PoE switch (Part No. CEN-SW-POE-5 shown).**

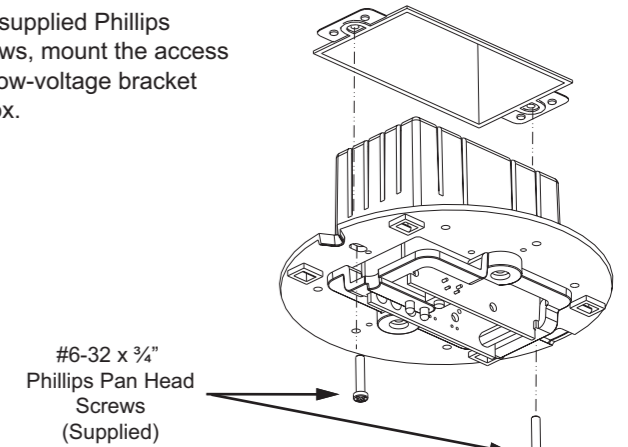
Up to four access points can connect to the CEN-SW-POE-5 switch. For additional information about the switch, refer to the latest version of the CEN-SW-POE-5 Switch Installation Guide (Doc. 6694).



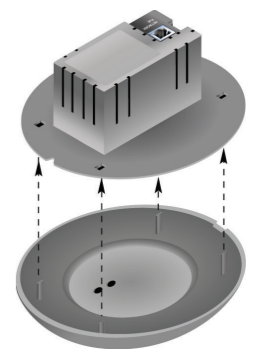
- **Third-party 802.3af compliant power source.**

For installation information, refer to the documentation supplied with the third-party device.

3. Using the two supplied Phillips pan head screws, mount the access point into the low-voltage bracket or electrical box.



4. Reattach the cover by aligning the four tabs inside the cover with the rectangular holes in the base of the unit and pushing the cover until it snaps into place.



3 Connecting to a Crestron Wi-Fi Touchpanel

NOTE: If you wish to connect Crestron Wi-Fi touchpanels to the CEN-WAP-ABG-CM using the unique preconfigured settings of the access point, refer to the information provided in this section. If, however, you wish to customize the configuration settings of the access point, skip this section and proceed to section 4.

Before beginning the steps to connect a touchpanel to the access point, you must know the unique **network name (SSID)** and **network key** that have been assigned to the access point at the factory. Locate this information on the sticker that is attached to the cover of the unit. Below is a sample sticker.

Network Name:
Crestron-08a24d
Key: 18AC439265

To connect a touchpanel to the access point, refer to the general guidelines below and, if necessary, to the manual supplied with the touchpanel for details. An example connecting the TPMC-8X to the access point is provided to the right.

GENERAL TOUCHPANEL CONNECTIVITY GUIDELINES

- Access the setup screen of the touchpanel.
- Navigate to the window that allows you to select a wireless network. Select the network name, which matches the network name on the sticker attached to the cover of the access point.
- Enter the 10-character network key that appears on the sticker. Note that the network key is not case sensitive.
- From the setup screen, navigate to the window that allows you to enable communication between the touchpanel and the control system. Select the IP ID of the touchpanel and enter the IP address of the control system.
- To verify touchpanel connectivity to the WAP, observe the signal strength on the touchpanel setup screen as you move the touchpanel to the perimeters of the intended usage area. The signal strength should be greater than 50 percent.

After all devices are connected to the network, it is recommended that you remove the sticker to ensure network security.

EXAMPLE: CONNECTING THE TPMC-8X TO THE ACCESS POINT

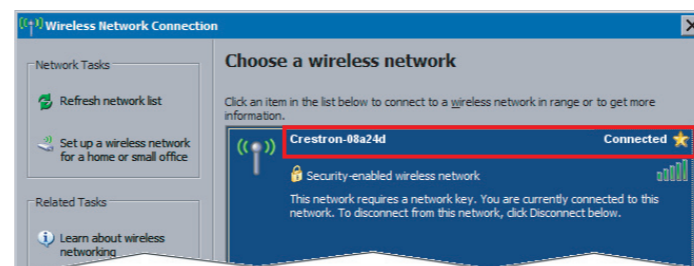
To connect the TPMC-8X to the access point:

- Access the TPMC-8X setup screen.



- Navigate to the window that allows you to select a wireless network:

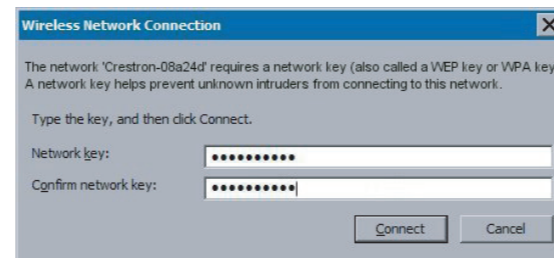
- On the setup screen, press the **Adapters** button to open the “Ethernet Setup” window.
- Click **Configure** to open the “Wireless Network Connection Properties” window.
- Click the *Wireless Networks* tab.
- Click **View Wireless Networks** to view the “Wireless Network Connection” window.
- Select the network name provided on the access point sticker, and then click **Connect**. The touchpanel connects to the access point as shown in the sample screen below.



The network name on the screen (for example, Crestron-08a24d) matches the network name on the access point sticker.

- In the “Wireless Network Connection” (Network Key) window, do the following:

- Enter and confirm the network key provided on the access point sticker. The network key is displayed as solid black circles as you type.

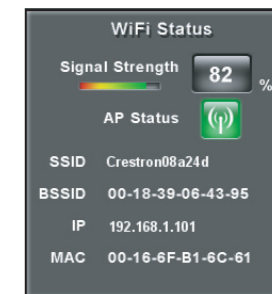


- Click **Connect**.

- Enable communication between the touchpanel and the control system:

- On the setup screen, press the **IP Table** button.
- In the “IP Table Setup” window, add the IP ID of the touchpanel and the IP address of the control system.

- On the setup screen, observe the Wi-Fi status as you move the touchpanel to the perimeters of the intended usage area. Ensure that the signal strength is greater than 50 percent and that the AP Status icon remains green.



4 Configuring the CEN-WAP-ABG-CM

NOTE: Configure the access point only if customized configuration settings are desired.

- Connect a PC to the same network as the access point.
- Open Crestron Toolbox™.
- From the **Tools** menu, select **Device Discovery Tool**.
- Select **CEN-WAP-ABG-1G**. The “Password” window opens.
- Enter the default login *admin* and the default password *admin*.
- Do either of the following:
 - Use the *Setup Wizard* mode to select a scenario—such as a stand-alone network or a high security network—for configuration.
 - Configure all parameters using the *Custom Settings* mode.