

Crestron **TPS-XDS**  
Docking Station for TPS-XTXRF

---

Operations Guide



This document was prepared and written by the Technical Documentation department at:



Crestron Electronics, Inc.  
15 Volvo Drive  
Rockleigh, NJ 07647  
1-888-CRESTRON

# Contents

<b>Docking Station for TPS-XTXRF: TPS-XDS</b>	<b>1</b>
Description.....	1
Functional Description .....	1
Physical Description.....	1
Leading Specifications.....	3
Using the TPS-XDS.....	4
Problem Solving .....	6
Troubleshooting .....	6
Further Inquiries .....	7
Future Updates .....	7
Return and Warranty Policies.....	8
Merchandise Returns / Repair Service .....	8
CRESTRON Limited Warranty .....	8



# Docking Station for TPS-XTXRF: TPS-XDS

---

## Description

### Functional Description

The TPS-XDS is a docking station designed to power the Crestron Isys™ tilt touchpanel equipped with the optional TPS-XTXRF Two-Way radio frequency (RF) Transceiver Module. The TPS-XDS charges the TPS-XBTP Battery Pack when the battery pack is installed in the touchpanel.

---

**NOTE:** Throughout this Operations Guide, an Isys™ tilt touchpanel equipped with the optional TPS-XTXRF Two-Way RF Transceiver Module and TPS-XBTP Battery Pack is referred to as “touchpanel” except where noted. For related information, consult the TPS-XTXRF Operations & Installation Guide (Doc. 5844) and TPS-XBTP Operations Guide (Doc. 5845). The latest versions of the guides are available from the Downloads | Product Manual section of the Crestron website ([www.crestron.com](http://www.crestron.com)).

---

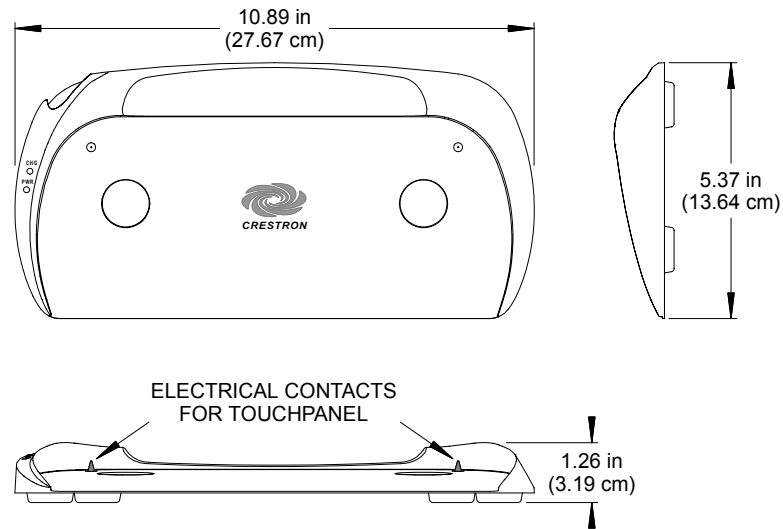
The TPS-XDS powers the touchpanel as long as the electrical contacts of the touchpanel and the TPS-XDS remain together. Depending on the operating conditions of the touchpanel, the TPS-XDS will fast charge and/or slow charge the battery to maintain optimum performance\*. Power to the TPS-XDS is supplied by a provided external power pack and the duration of the charge is continuous as long as the battery is not fully charged. The touchpanel may be operated during the charging process but charging time is extended.

\* Refer to the latest revision of the TPS-XBTP Operations Guide (Doc. 5845), *Leading Specifications*, for battery charging times.

### Physical Description

The TPS-XDS (see following illustration) is housed in a black enclosure with labeling on the left side and touchpanel docking area. On the left side of the unit are two light-emitting diodes (LEDs). The PWR (GREEN) LED indicates that power is available to the TPS-XDS, and the CHG (RED) LED indicates charge or touchpanel in-use status. An external power pack supplies power via a direct current (DC) power socket connector. Four rubber feet are on the base of the TPS-XDS for stability and to prevent slippage.

**TPS-XDS Physical Views**

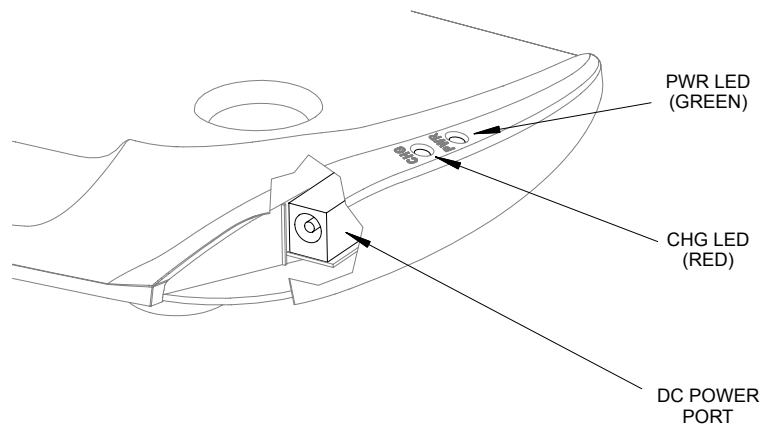


UNIT WEIGHT:  
1.30 lbs (0.51 kg)

**Port & Indicators**

Two LED indicators and one DC power port are located on the left side of the TPS-XDS. Refer to the diagram below and the following descriptions.

**TPS-XDS Power Port & Indicators**



**PWR LED (Power Available)**

Illuminates green when power is provided to the TPS-XDS via the external power pack.

**CHG LED (Charge)**

Illuminates red when the touchpanel (without a battery pack installed) is docked and being operated. The LED also illuminates whenever a properly docked touchpanel is in standby mode and the TPS-XBTP is properly installed in the touchpanel. When the TPS-XBTP is fully charged and the docked touchpanel is in standby mode or OFF, the CHG LED goes out. While the touchpanel remains inactive (OFF), the TPS-XDS automatically recharges the TPS-XBTP within 3-4 hours.

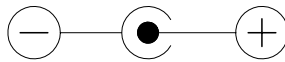
**DC Power Port (not labeled)**

Used to supply power via the external power pack. Crestron recommends specific power packs for its devices. The provided power pack for the TPS-XDS is Crestron part number **PW-2420RU** for non-international and international use. If you want to use a power pack other than the Crestron model, verify that it meets the following specifications and polarity.

*Power Pack Specifications*

POWER REQUIREMENTS	OUTPUT
120VAC 60Hz or 240 VAC 50Hz	24VDC 2A minimum, regulated

*Power Pack Polarity*



## Leading Specifications

The following table provides a summary of leading specifications for the TPS-XDS.

*Leading Specifications of the TPS-XDS*

SPECIFICATIONS	DESCRIPTION
Dimensions and Weight	Height: 1.26 in (3.19 cm) Width: 10.89 in (27.67 cm) Depth: 5.87 in (13.34 cm) Weight: 1.30 lb (0.535 kg)

As of the date of manufacture, the TPS-XDS has been tested and found to comply with specifications for CE marking and standards per EMC and Radiocommunications Compliance Labelling (N14176).



---

## Using the TPS-XDS

---

**WARNING:** To avoid possible physical harm, damage to the TPS-XDS or touchpanel, use only specified external power pack PW-2420RU or equivalent when charging.

**WARNING:** Charge the touchpanel in a well-ventilated area away from sparks and open flame. Do not use the touchpanel near heat sources such as radiators, heat registers, stoves, or other apparatus.

**CAUTION:** Avoid accidental shorting of the electrical contacts to prevent possible damage to the external power pack. If shorted, remove the shorting object(s) and the power pack will automatically reset within 5-10 seconds.

**NOTE:** We recommend that instead of removing power from the TPS-XDS by pulling the power plug out of DC power port, you set the OFF/ON switch on the power pack to OFF.

**NOTE:** Make sure that the TPS-XBTP battery pack is properly installed in the TPS-XTXRF equipped touchpanel.

**NOTE:** Charging of TPS-XBTP is determined by internal temperature, not voltage. The TPS-XBTP/touchpanel will not charge if the internal temperature of the battery pack is too high. Excessive temperature may be produced by high room temperature, heavy usage of the TPS-XVGA/-BV RGB Computer Interface Card and/or TPS-VID Video Card, blocked TPS-XTXRF vents, etc. The TPS-XBTP will begin to recharge when cooled. Refer to the latest revision of the TPS-XBTP (Doc. 5845) Operations Guide, *Leading Specifications*, for the battery operating temperature range.

---

1. Setup the external power pack according to the Operations Guide provided with the power pack.

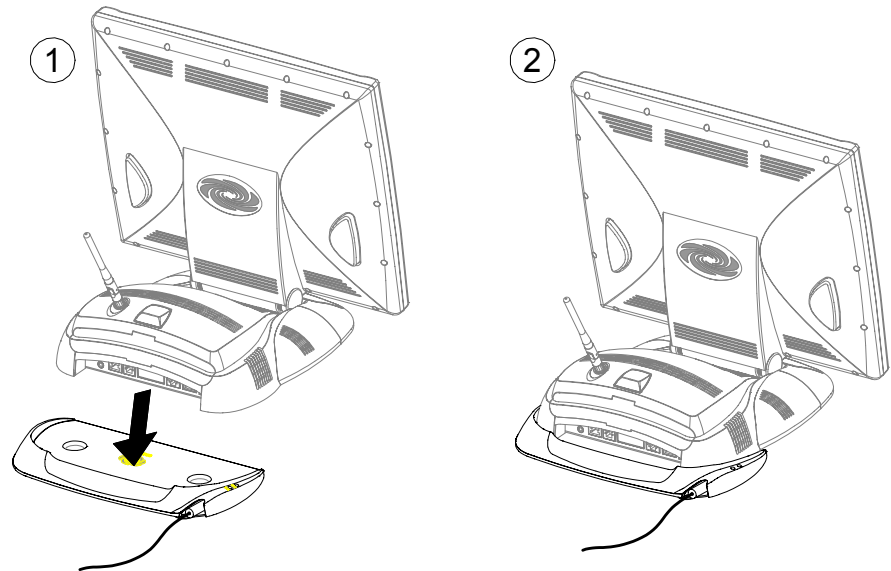
---

**NOTE:** The latest version of the PW-2420RU Power Pack Operations Guide (Doc. 5892) can be obtained from the Downloads | Product Manual section of the Crestron website ([www.crestron.com](http://www.crestron.com)).

---

2. Set the power pack OFF/ON switch to ON.
3. Place the touchpanel on the TPS-XDS docking area as shown on next page. The electrical contacts are self-aligning with the touchpanel.



**Place Touchpanel on TPS-XDS**

---

**NOTE:** The touchpanel may be operated during the charging process but charging time is significantly extended. Depending on touchpanel model, activity, optional expansion cards installed, backlight usage/brightness, etc., charge time may be from 8-1/2 to 14 hours. Refer to the latest revision of the TPS-XTXRF (Doc. 5844) Operations Guide, *Leading Specifications* for more information on charging times.

**NOTE:** Operating time for an undocked TPS-XTXRF (battery installed) will vary depending on touchpanel model, activity, optional expansion cards installed, backlight usage/brightness, etc. For example, undocked operating time of a TPS-XTXRF equipped TPS-6000 touchpanel with all optional cards and a new, fully charged TPS-XBTP is typically 2-hours before charging is required. Refer to the latest revision of the TPS-XBTP Operations Guide (Doc. 5845), *Leading Specifications*, for battery charging times.

---

## Problem Solving

### Troubleshooting

The table below provides corrective action for possible problems. If further assistance is required, please contact a Crestron customer service representative.

#### *TPS-XDS Troubleshooting*

TROUBLE	POSSIBLE CAUSE(S)	CORRECTIVE ACTION
Green PWR LED does not illuminate.	TPS-XDS is not receiving power.	Confirm that external power pack securely plugged into outlet and that the connector is properly attached to the TPS-XDS.
	Power pack switch not in ON position.	Position power pack switch to ON.
	Power pack has been shorted at output plug. (Power pack LED not lit.)	Allow 5-10 seconds for power pack to automatically reset.
		Disconnect power pack output plug from TPS-XDS & reconnect. Disconnect AC input plug from power pack output & reconnect. Replace power pack.
Red CHG LED does not illuminate.	Touchpanel is fully charged and in standby mode or OFF.	No action is required.
	TPS-XDS has intermittent contact with the touchpanel.	Properly position the touchpanel onto the TPS-XDS. The contacts may be dirty. Unplug the external power pack from the TPS-XDS and clean the TPS-XDS contacts with a dry, lint-free cloth.
TPS-XDS does not charge touchpanel.	Touchpanel/TPS-XBTP has been stored in a cold environment.	Allow touchpanel/TPS-XBTP to obtain room temperature before attempting to charge.
	Excessive Touchpanel/TPS-XBTP internal temperature. *	
	TPS-XBTP will not charge.	Replace TPS-XBTP.

\* A high internal temperature in the touchpanel may be caused by heavy usage of the TPS-XVGA/-BV RGB Computer Interface Card and/or TPS-VID Video Card, blocked TPS-XTXRF vents, high room temperature, etc.

## Further Inquiries

If after reviewing this Operations Guide, you cannot locate specific information or have questions, please take advantage of Crestron's award winning customer service team by calling:

- In the US and Canada, call Crestron's corporate headquarters at 1-888-CRESTRON [1-888-273-7876].
- In Europe, call Crestron International at +32-15-50-99-50.
- In Asia, call Crestron Asia at +852-2341-2016.
- In Latin America, call Crestron Latin America at +5255-5093-2160.
- In Australia and New Zealand, call Crestron Control Solutions at +61-2-9737-8203.

## Future Updates

As Crestron improves functions, adds new features, and extends the capabilities of the TPS-XDS, additional information may be made available as manual updates. These updates are solely electronic and serve as intermediary supplements prior to the release of a complete technical documentation revision.

Check the Crestron website ([www.crestron.com](http://www.crestron.com)) periodically for manual update availability and its relevance. Updates are available from the Download | Product Manuals section and are identified as an "Addendum" in the Download column.

---

## Return and Warranty Policies

### Merchandise Returns / Repair Service

1. No merchandise may be returned for credit, exchange, or service without prior authorization from CRESTRON. To obtain warranty service for CRESTRON products, contact the factory and request an RMA (Return Merchandise Authorization) number. Enclose a note specifying the nature of the problem, name and phone number of contact person, RMA number, and return address.
2. Products may be returned for credit, exchange, or service with a CRESTRON Return Merchandise Authorization (RMA) number. Authorized returns must be shipped freight prepaid to CRESTRON, 6 Volvo Drive, Rockleigh, N.J., or its authorized subsidiaries, with RMA number clearly marked on the outside of all cartons. Shipments arriving freight collect or without an RMA number shall be subject to refusal. CRESTRON reserves the right in its sole and absolute discretion to charge a 15% restocking fee, plus shipping costs, on any products returned with an RMA.
3. Return freight charges following repair of items under warranty shall be paid by CRESTRON, shipping by standard ground carrier. In the event repairs are found to be non-warranty, return freight costs shall be paid by the purchaser.

### CRESTRON Limited Warranty

CRESTRON ELECTRONICS, Inc. warrants its products to be free from manufacturing defects in materials and workmanship under normal use for a period of three (3) years from the date of purchase from CRESTRON, with the following exceptions: disk drives and any other moving or rotating mechanical parts, pan/tilt heads and power supplies are covered for a period of one (1) year; touchscreen display and overlay components are covered for 90 days; batteries and incandescent lamps are not covered.

This warranty extends to products purchased directly from CRESTRON or an authorized CRESTRON dealer. Purchasers should inquire of the dealer regarding the nature and extent of the dealer's warranty, if any.

CRESTRON shall not be liable to honor the terms of this warranty if the product has been used in any application other than that for which it was intended, or if it has been subjected to misuse, accidental damage, modification, or improper installation procedures. Furthermore, this warranty does not cover any product that has had the serial number altered, defaced, or removed.

This warranty shall be the sole and exclusive remedy to the original purchaser. In no event shall CRESTRON be liable for incidental or consequential damages of any kind (property or economic damages inclusive) arising from the sale or use of this equipment. CRESTRON is not liable for any claim made by a third party or made by the purchaser for a third party.

CRESTRON shall, at its option, repair or replace any product found defective, without charge for parts or labor. Repaired or replaced equipment and parts supplied under this warranty shall be covered only by the unexpired portion of the warranty.

Except as expressly set forth in this warranty, CRESTRON makes no other warranties, expressed or implied, nor authorizes any other party to offer any warranty, including any implied warranties of merchantability or fitness for a particular purpose. Any implied warranties that may be imposed by law are limited to the terms of this limited warranty. This warranty statement supercedes all previous warranties.

#### Trademark Information

All brand names, product names, and trademarks are the sole property of their respective owners. Windows is a registered trademark of Microsoft Corporation. Windows95/98/Me/XP and WindowsNT/2000 are trademarks of Microsoft Corporation.

This page intentionally left blank.

This page intentionally left blank.

This page intentionally left blank.



---

**Crestron Electronics, Inc.**  
15 Volvo Drive Rockleigh, NJ 07647  
Tel: 888.CRESTRON  
Fax: 201.767.7576  
[www.crestron.com](http://www.crestron.com)

**Operations Guide - DOC. 5846**  
**03.02**

Specifications subject to  
change without notice.