

Crestron **BB-1600**

Back Box

Installation Guide



CRESTRON

This document was prepared and written by the Technical Documentation department at:



Crestron Electronics, Inc.
15 Volvo Drive
Rockleigh, NJ 07647
1-888-CRESTRON

Contents

Back Box: BB-1600	1
Description	1
Installation	3
Construction Method	3
Post-Construction Method	5
Further Inquiries.....	9
Future Updates	9
Cutout Detail of Supplied Template.....	10
Return and Warranty Policies	11
Merchandise Returns / Repair Service.....	11
CRESTRON Limited Warranty.....	11

Back Box: BB-1600

Description

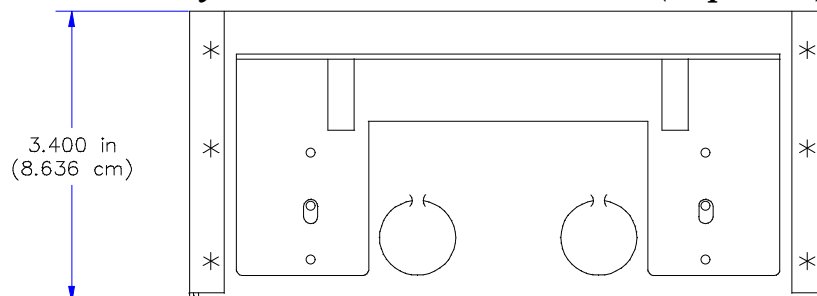
The back box, BB-1600, is the optional mounting hardware that secures a Crestron Series 1600 Lectern/Wall Mount Touchpanel to a wall or other suitable mounting surface.

Supplied Components

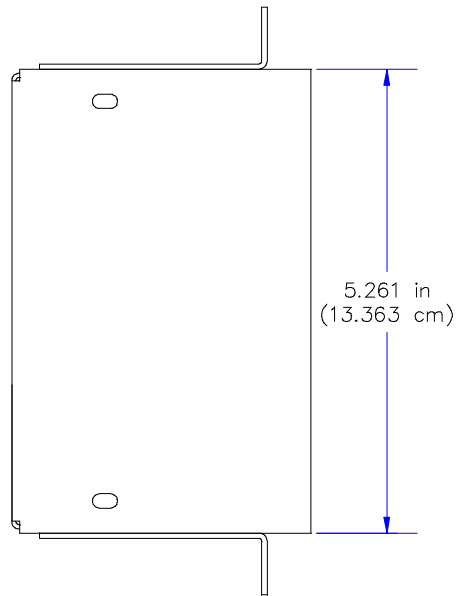
DESCRIPTION	PART NUMBER	QUANTITY
Metal Electrical Box with 4 knockouts	AY17434-1	1
Metal Mounting Bracket	MTBK02542-1	2
Metal Mounting Plate	MTPL02541-1	2
Screw, 6-32 x 1"L, pan, phillips, black	SR06-32-1R000-3	4
Screw, 6-32 x 3/8"L, socket hex	SR06-32-0R3750-3	4
Template	OV40047-1	1

Three views with dimensions for the metal pieces of the BB-1600 are shown below and on the next page.

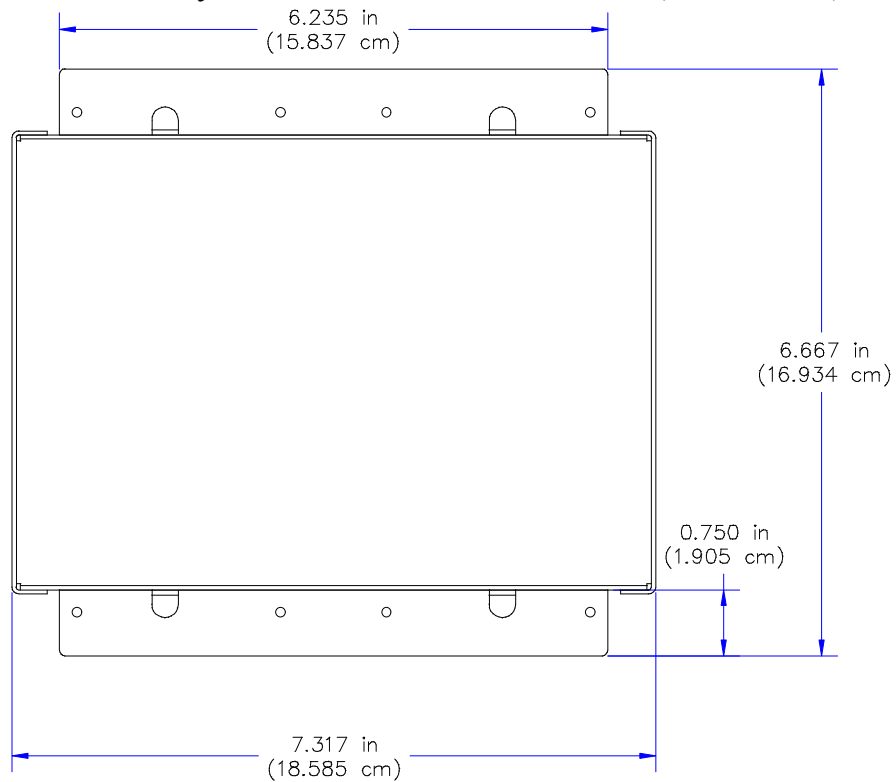
BB-1600 Physical Views and Dimensions (Top View)



BB-1600 Physical Views and Dimensions (Side View)



BB-1600 Physical Views and Dimensions (Back View)



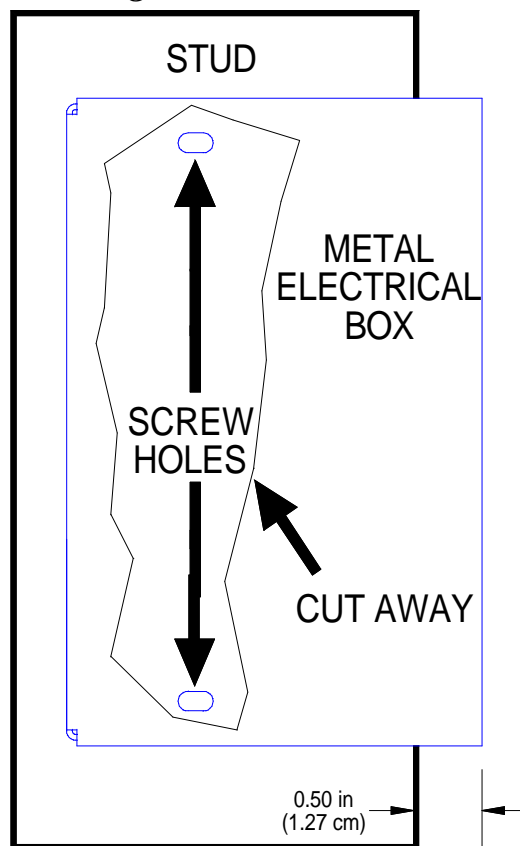
Installation

There are at least two different methods of installing the BB-1600. The construction method is preferred during the construction process. Use this method to wall mount a Crestron Series 1600 Lectern/Wall Mount Touchpanel to a wall stud. At this time the rooms in which the panel is to be installed are framed and the gypsum board has not been hung. The post-construction method is preferred for wall mounting when the rooms are complete and the gypsum board has already been hung. The post-construction method is also desirable when lectern mounting the panel.

Construction Method

This method requires two #6 mounting screws (or equivalent) and a drill with bit for two #6 mounting screws. Other tools required include a #2 Phillips tip screwdriver, a socket screwdriver (length should not exceed 4.5"), a 5/16" drill bit, a #20 drill bit, and a gypsum board saw (or equivalent). Complete the following installation procedure in the order provided.

1. Remove necessary knockout(s) from metal electrical box.
2. Use four socket hex head screws (3/8" length), supplied, to loosely secure two metal brackets to the back box.
3. Position the metal electrical box to the stud. If 5/8" gypsum board is used, be sure that 1/2" of the box protrudes from the stud as illustrated in the metal electrical box cut away shown on the next page.

Securing Metal Electrical Box to Stud

4. Use two #6 screws, not supplied, to secure metal electrical box to the stud.
5. Pull Cresnet wire through open knockout(s) in metal electrical box.

NOTE: Wait for gypsum board to be hung before continuing with remainder of construction method installation.

6. Fasten template, supplied, to mounting surface; cut out and remove the traced shape.
7. Drill four 5/16" holes as marked on template. Only drill through gypsum board. Use caution and do not drill through metal bracket that rests behind gypsum board. Refer to "Cutout Detail of Supplied Template" on page 10 for an illustrative reference.
8. Drill eight holes marked "A" on template with #20 bit. Only drill through gypsum board. Use caution and do not drill through metal bracket that rests behind gypsum board. Refer to "Cutout

Detail of Supplied Template" on page 10 for an illustrative reference.

9. Position one metal mounting plate along the top horizontal edge so that it covers the two center holes marked "A".
10. Use two pan head screws (1" length) supplied, to loosely secure the bracket and plate to the mounting surface.
11. Position one metal mounting plate along the bottom horizontal edge so that it covers the two center holes marked "A".
12. Use two pan head screws (1" length) supplied, to loosely secure the bracket and plate to the mounting surface.
13. Tighten four screws installed in steps 10 and 12 with a Phillips screwdriver. Be careful not to crack gypsum board.
14. Verify that the rim of the back box is recessed approximately 1/8" from the mounting surface and use fingers to tighten four socket hex head screws. Using a socket screwdriver, tighten each screw an additional 1/8-turn.
15. If touchpanel is available, secure touchpanel to BB-1600 using four pan head screws, supplied with the touchpanel.

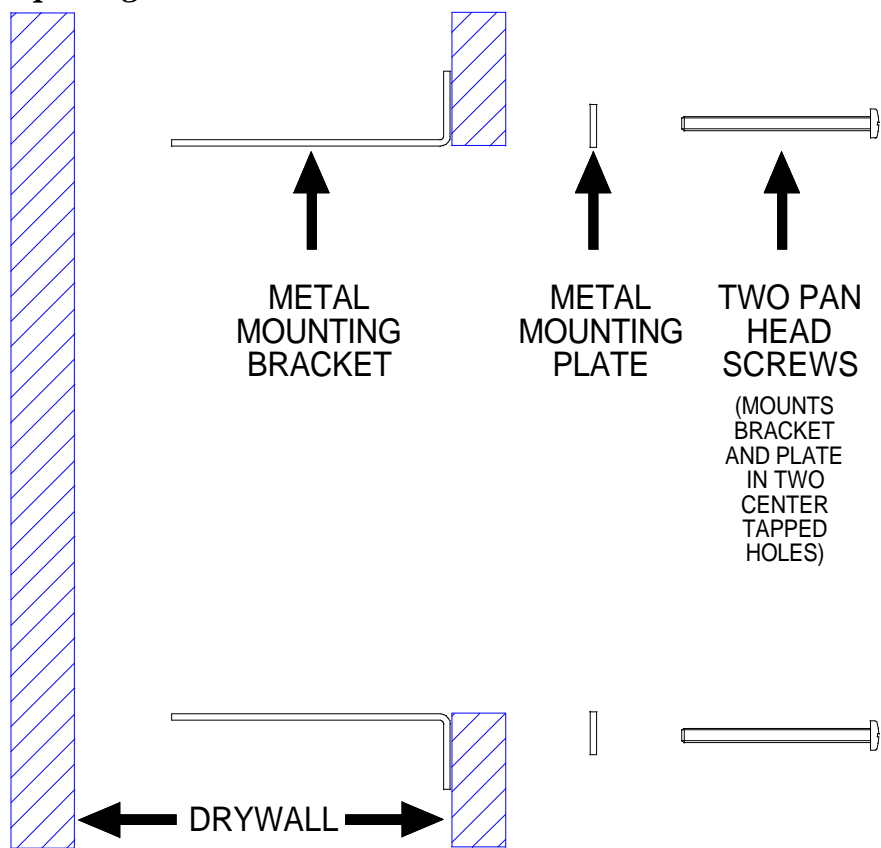
Post-Construction Method

The only tools required are a gypsum board saw (or equivalent), a socket screwdriver (length should not exceed 4.5"), a #2 Phillips tip screwdriver, a drill, a 5/16" drill bit, and a #20 drill bit. Complete the following installation procedure in the order provided.

1. Locate an area on the wall or other suitable mounting surface that is clear of studs, wires, and other obstructions.
2. Make a small hole near the middle of the designated site; verify location is suitable.
3. Fasten cutout template (40047, supplied) to mounting surface; verify that the template is level.
4. Cut out and remove the traced shape of mounting surface.
5. Drill four 5/16" through holes. Refer to "Cutout Detail of Supplied Template" on page 10 for an illustrative reference.

6. Drill eight holes marked "A" with #20 drill. Refer to "Cutout Detail of Supplied Template" on page 10 for an illustrative reference.
7. Slide one metal mounting bracket through the opening and position it inside along the top horizontal edge.
8. Position one metal mounting plate along the top horizontal edge so that it covers the two center holes marked "A".
9. Use two pan head screws, supplied, to secure the bracket and plate to the mounting surface. Tighten by hand; do not fully tighten screws.

Securing Bracket/Plate Assembly to Top and Bottom Edges of Opening

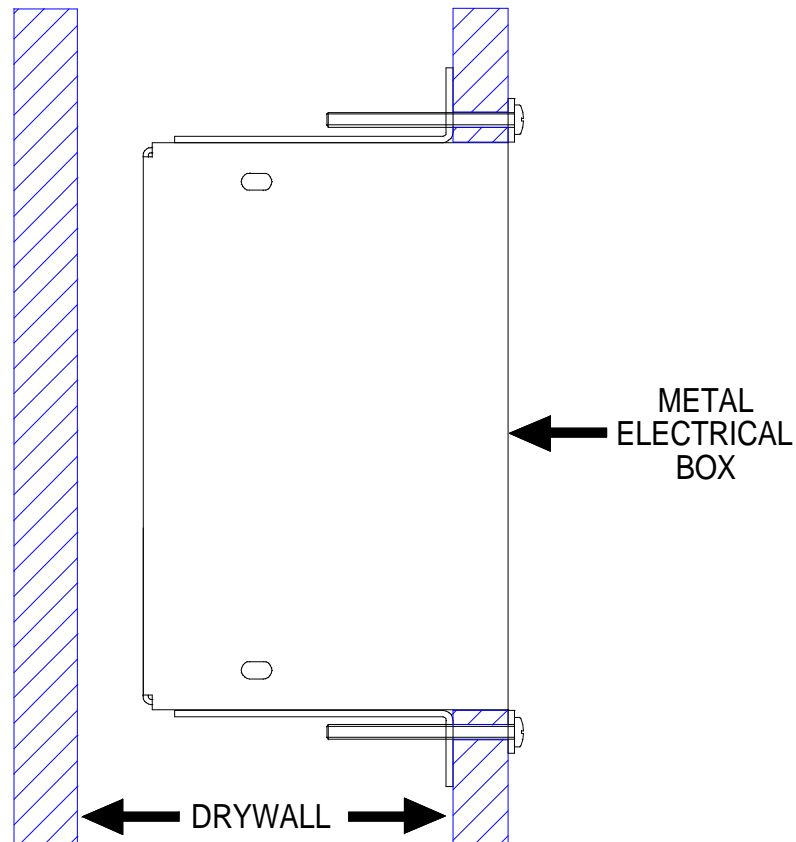


10. Repeat steps 7 through 9 for the bottom horizontal edge of the opening.
11. Remove necessary knockout(s) from metal electrical box.
12. Pull Cresnet wire through open punch in metal electrical box.

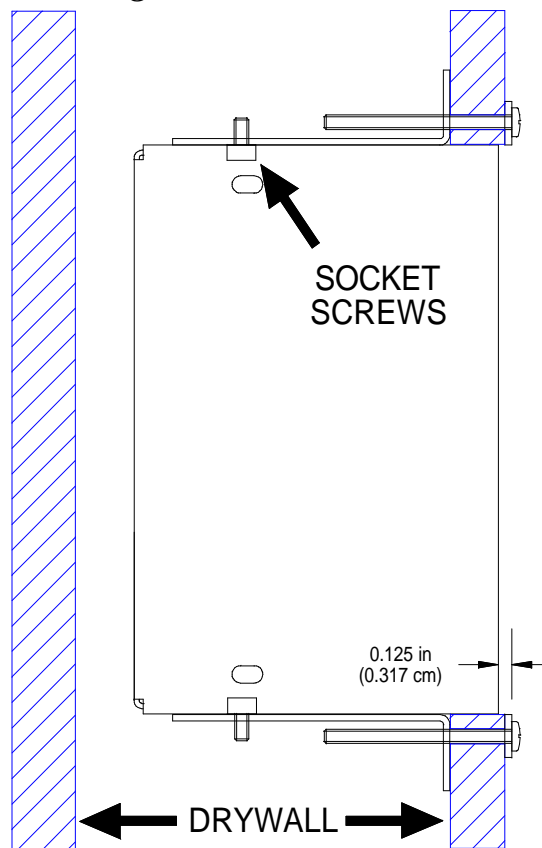
- Slide the electrical back box through the opening until the rim of the back box is flush with the mounting surface. Refer to the illustration below.

NOTE: Do not slide the back box too far into the opening or it may fall in between the gypsum board (e.g., if installation is into an exterior wall).

Positioning Back Box into Opening



- Use screwdriver to tighten four pan head screws installed in steps 9 and 10. Be careful not to crack gypsum board.
- Use four socket screws, supplied, to loosely secure the back box to the bracket plate assembly.

Securing Back Box to Bracket/Plate Assembly

16. Verify that the rim of the back box is recessed approximately 1/8" from the mounting surface before using fingers to tighten the four socket screws. Using a socket screwdriver, tighten each screw an additional 1/8-turn.
17. If touchpanel is available, secure touchpanel to BB-1600 using four pan head screws, supplied with the touchpanel. Tighten screws by hand being careful not to crack the gypsum board.

Further Inquiries

If after reviewing this Operations Guide for the BB-1600, you cannot locate specific information or have questions, please take advantage of Crestron's award winning customer service team by calling:

- In the US and Canada, call Crestron's corporate headquarters at 1-888-CRESTRON [1-888-273-7876] or 1-201-767-3400.
- In Europe, call Crestron International at +32-15-50-99-50.
- In Asia, call Crestron Asia at +852-2341-2016.
- In Latin America, call Crestron Latin America at +525-260-4336.

For local support from exclusive Crestron factory-trained personnel call:

- In Australia, call Soundcorp at +613-9488-1555.
- In New Zealand, call Amber Technologies at +649-410-8382.

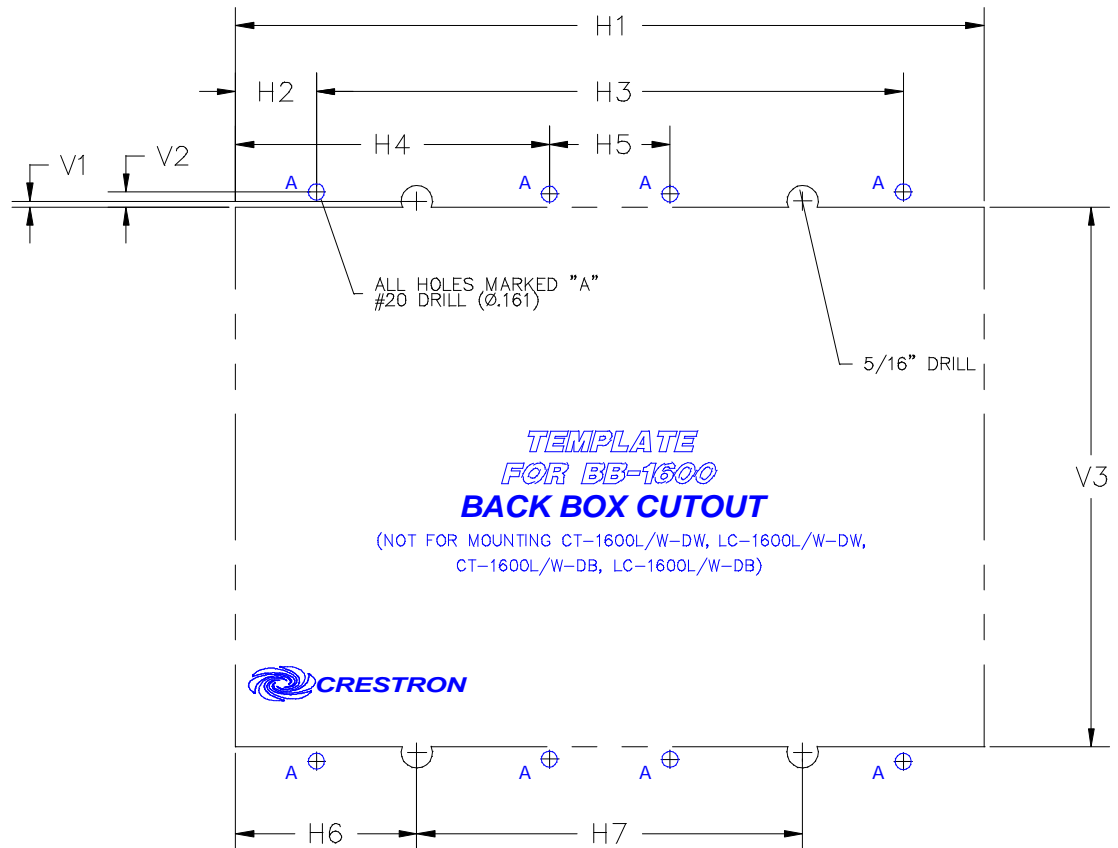
Future Updates

As Crestron improves functions, adds new features, and extends the capabilities of the BB-1600, additional information may be made available as manual updates. These updates are solely electronic and serve as intermediary supplements prior to the release of a complete technical documentation revision.

The Downloads page of the Crestron website (www.crestron.com) directs the reader to the location and description of each update. Check the site periodically for update availability and its subjective value.

Cutout Detail of Supplied Template

Use the alphanumeric codes in the illustration and table to obtain the cutout dimensions for the BB-1600. However, Crestron recommends that the supplied template be used to avoid error.



VERTICAL MEASUREMENTS	
V1	= 0.058 in (0.147 cm) typ.
V2	= 0.148 in (0.376 cm) typ.
V3	= 5.385 in (13.678 cm)

HORIZONTAL MEASUREMENTS	
H1	= 7.440 in (18.898 cm)
H2	= 0.803 in (2.040 cm)
H3	= 5.835 in (14.821 cm)
H4	= 3.120 in (7.925 cm)
H5	= 1.200 in (3.048 cm)
H6	= 1.803 in (4.580 cm)
H7	= 3.835 in (9.741 cm)

Return and Warranty Policies

Merchandise Returns / Repair Service

1. No merchandise may be returned for credit, exchange, or service without prior authorization from CRESTRON. To obtain warranty service for CRESTRON products, contact the factory and request an RMA (Return Merchandise Authorization) number. Enclose a note specifying the nature of the problem, name and phone number of contact person, RMA number, and return address.
2. Products may be returned for credit, exchange, or service with a CRESTRON Return Merchandise Authorization (RMA) number. Authorized returns must be shipped freight prepaid to CRESTRON, Cresskill, N.J., or its authorized subsidiaries, with RMA number clearly marked on the outside of all cartons. Shipments arriving freight collect or without an RMA number shall be subject to refusal. CRESTRON reserves the right in its sole and absolute discretion to charge a 15% restocking fee, plus shipping costs, on any products returned with an RMA.
3. Return freight charges following repair of items under warranty shall be paid by CRESTRON, shipping by standard ground carrier. In the event repairs are found to be non-warranty, return freight costs shall be paid by the purchaser.

CRESTRON Limited Warranty

CRESTRON ELECTRONICS, Inc. warrants its Cresnet products, denoted by a "CN" prefix model number, to be free from manufacturing defects in materials and workmanship for a period of three (3) years from the date of shipment to purchaser. Disk drives and any other moving or rotating mechanical parts are covered for a period of one (1) year. CRESTRON warrants all its other products for a period of one year from the defects mentioned above, excluding touchscreen display components which are covered for 90 days. Incandescent lamps are completely excluded from Crestron's Limited Warranty. CRESTRON shall, at its option, repair or replace any product found defective without charge for parts or labor. Repaired or replaced equipment and parts supplied under this warranty shall be covered only by the unexpired portion of the warranty.

CRESTRON shall not be liable to honor warranty terms if the product has been used in any application other than that for which it was intended, or if it has been subjected to misuse, accidental damage, modification, or improper installation procedures. Furthermore, this warranty does not cover any product that has had the serial number altered, defaced, or removed.

This warranty shall be the sole and exclusive remedy to the purchaser. In no event shall CRESTRON be liable for incidental or consequential damages of any kind (property or economic damages inclusive) arising from the sale or use of this equipment. CRESTRON makes no other warranties nor authorizes any other party to offer any warranty, expressed or implied, including warranties of merchantability for this product. This warranty statement supersedes all previous warranties.

Trademark Information

All brand names, product names, and trademarks are the sole property of their respective owners. Windows is a registered trademark of Microsoft Corporation. Windows95, Windows98 and WindowsNT are trademarks of Microsoft Corporation.



Crestron Electronics, Inc.
15 Volvo Drive Rockleigh, NJ 07647
Tel: 888.CRESTRON
Fax: 201.767.7576
www.crestron.com

Operations Guide – DOC. 5835A
12.00

Specifications subject to
change without notice.