



Description

The Crestron® TSR-310-BTP is a rechargeable lithium polymer battery pack that is designed to replace the battery pack in a Crestron TSR-310 handheld touch screen remote (not included).

NOTE: To view an instructional video showing the procedures documented in this guide, visit <https://vimeo.com/252558509>, or use a QR reader application on your mobile device to scan the “Instructional Video” QR image located in “Additional Resources” below.

Additional Resources

Visit the product page on the Crestron website (www.crestron.com) for additional information and the latest firmware updates. An instructional video showing installation procedures can also be viewed. Use a QR reader application on your mobile device to scan the QR images, or click the QR images to load the web pages.



Product Page



Instructional Video

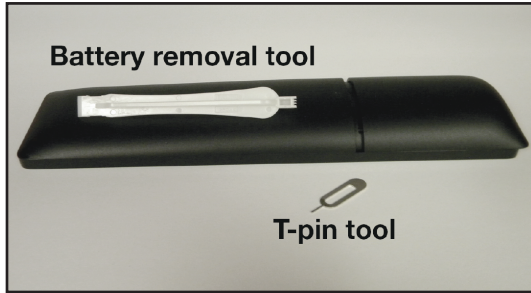
Supplied Hardware

Refer to the following table for a complete list of parts that are included with the TSR-310-BTP:

Supplied Hardware for TSR-310-BTP

QUANTITY	ITEM	PART NUMBER
1	Tool, Battery Removal	2050938
1	Tool, T-Pin	2050937

Battery Removal Tool and T-Pin Tool

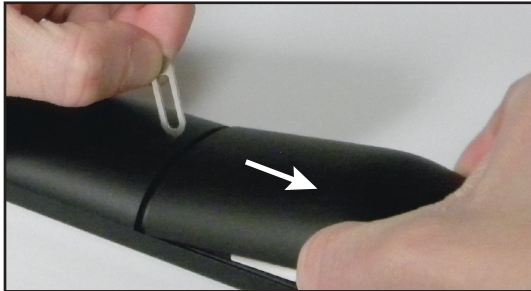


Remove the Existing Battery Pack

To remove the existing battery from the TSR-310:

- Place the TSR-310 on a clean, soft surface with the screen side facing down. Use care to avoid scratching the front surface of the TSR-310.
- Align the included t-pin tool with the small hole on the rear of the TSR-310.
- Slide the battery cover away from the TSR-310 while pressing the t-pin down and into the hole.

Removing the Battery Cover



- Lift the battery cover up and off the remote, and remove the insulating shroud that covers the battery.
- Place the flat end of the battery removal tool underneath the wires extending from the battery connector.
- Pull up gently on the wires using the battery removal tool until the battery connector disengages from the TSR-310 battery compartment.

CAUTION: Do not press the battery removal tool against the circuit board components when disengaging the battery connector.

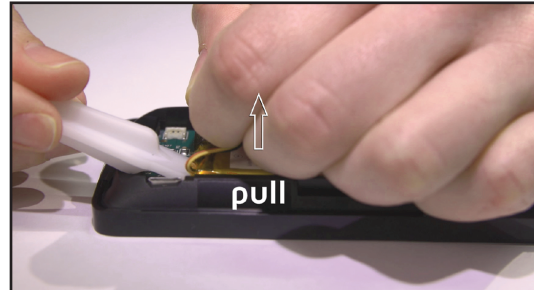
Removing the Battery Cover



- Hold on to the silver flap attached to the battery pack, and insert the flat end of the battery removal tool underneath the battery pack with the other hand.
- Place the flat end of the battery removal tool under the battery, and then carefully pry the battery pack up while pulling on the flap until the adhesive backing on the battery pack separates from the inside of the battery compartment.

CAUTION: Do not press the battery removal tool against the circuit board components when removing the battery pack.

Removing the Battery Pack



- Pull the battery pack out the compartment using the flap.

Install the New Battery Pack

Use the following procedure to install the new battery pack into the TSR-310:

- Peel the adhesive backing off of the bottom of the replacement battery pack to expose the adhesive surface.

Removing the Adhesive Backing



- Hold on to the silver flap attached to the battery pack with two fingers, and slide the battery pack at an angle down and into the TSR-310 battery compartment.

NOTE: The silver side of the battery pack (with the adhesive surface) must be facing downward.

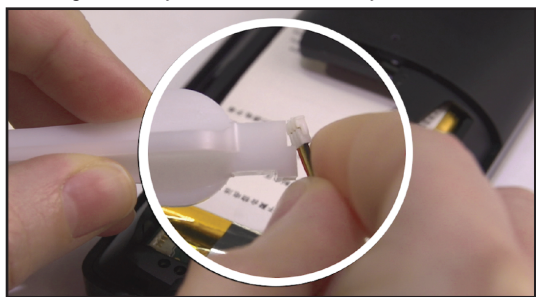
Inserting the Battery into the TSR-310



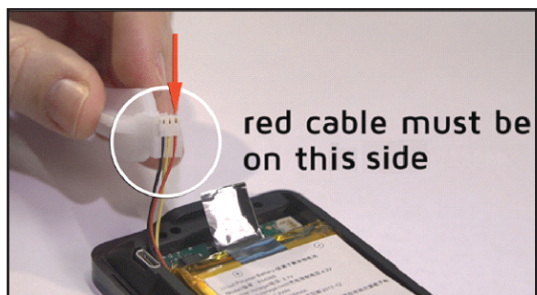
- Press down on the battery pack to adhere the battery pack to the inside of the battery compartment.

- Press the three wires extending from the battery connector into the three slots on the slotted end of the battery removal tool to attach the connector. Once the battery connector is attached to the tool, the red wire should be located on the side of the tool shown in the second image below.

Attaching the Battery Connector to the Battery Removal Tool



Correct Wire Placement on Battery Removal Tool



- Press the battery connector into the connector slot inside the TSR-310 battery compartment using the guides on the slotted end of the battery removal tool.

NOTE: Once the battery connector is installed, the red wire must be located next to the bottom of the remote, and the black wire must be located next to the battery pack. Refer to the following image for the correct wire placement.

Attaching the Battery Connector to the TSR-310



- Press the flat end of the battery removal tool into the battery connector until it is flat and secured inside of the connector slot.

Securing the Battery Connector



- Slide the insulating shroud over the battery pack so the two tabs on the shroud enter the spaces in between the sides of the battery pack and the battery compartment.

Placing the Insulating Shroud Over the Battery Pack



- Lower the battery cover onto the remote so that the two tabs inside the battery cover engage the two slots on either side of the battery compartment.

Reattaching the Battery Cover to the TSR-310



- Slide the battery cover up and into the remote until the cover snaps into place.

Charge the Battery Pack

Once the TSR-310-BTP replacement battery is installed in the TSR-310, place the TSR-310 into its charging dock. A "charging" notification appears on the TSR-310 touch screen display to indicate that the battery is charging.

NOTE: If the TSR-310 attempts to power on following a new battery pack installation but powers off immediately, place the TSR-310 on its charging dock to continue powering the device.

Store the Battery Pack

NOTE: The TSR-310-BTP should be charged between 30% and 50% when it is put into storage.

The TSR-310-BTP may be stored in a temperate, dry location (removed from the TSR-310) for up to six months without significant irreversible degradation of its performance. The self-discharge rate is a function of temperature and internal resistance. High-temperature storage reduces charge retention. Best results occur when the TSR-310-BTP is stored at a temperature of 32 °F to 95 °F (0 °C to 35 °C).

Dispose of the Battery Pack

NOTE: The TSR-310-BTP contains a lithium polymer battery. When the unit no longer retains a charge, it must be recycled or disposed of properly. Follow local ordinances and regulations for disposal.



The battery must be recycled. Deliver the battery to an appropriate recycling facility for disposal.

As of the date of manufacture, the product has been tested and found to comply with specifications for CE marking.



The product warranty can be found at www.crestron.com/legal/sales-terms-conditions-warranties.

The specific patents that cover Crestron products are listed at www.crestron.com/legal/patents.

Certain Crestron products contain open source software. For specific information, please visit www.crestron.com/legal/open-source-software.

Crestron and the Crestron logo are either trademarks or registered trademarks of Crestron Electronics, Inc. in the United States and/or other countries. Other trademarks, registered trademarks, and trade names may be used in this document to refer to either the entities claiming the marks and names or their products. Crestron disclaims any proprietary interest in the marks and names of others. Crestron is not responsible for errors in typography or photography.

This document was written by the Technical Publications department at Crestron.

©2018 Crestron Electronics, Inc.

Crestron Electronics, Inc.
15 Volvo Drive, Rockleigh, NJ 07647
Tel: 888.CRESTRON
Fax: 201.767.7576
www.crestron.com

Installation Guide - DOC. 8227B
(2049524)
05.18

Specifications subject to
change without notice.